

Products for Oil & Gas Production





Introduction

Dresser offers a broad range of pneumatically and electrically driven chemical pumps designed to pump chemicals in precise amounts. Our complete offering includes capacities from .05 gallons per day (.19 LPD) to 3,600 gallons per hour (13,627 LPH) and operating pressures to 10,000 psi (689 bar).

For years, we have been the leader in chemical pump application engineering. You can trust Dresser for all your tough jobs... so doesn't it make sense to go to the industry's leader when you really need help?

Inspection

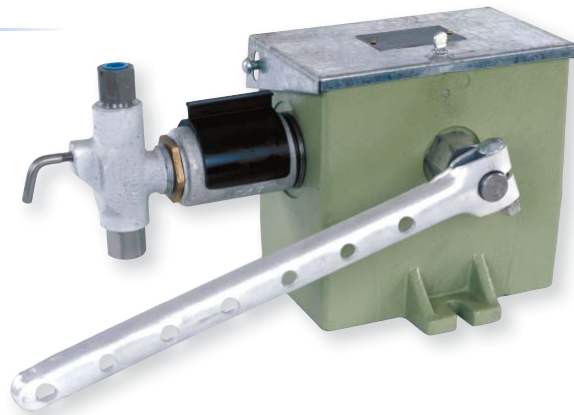
Testing Capabilities

- Hydrostatic testing
- Performance testing

The information contained in this condensed catalog is for general reference only. For more specific information, please consult the Texsteam general sales catalog

Series 1200 Beam Driven Injection Pump

- Designed for use on pumping wells
- Single or dual-headed units available
- Positive displacement
- Accurate chemical injection
- Simple design, easy maintenance



Plunger Size	Maximum Discharge Pressure	Maximum Volume Output	
		Simple Unit	Duplex Unit
3/16"	3000 psi 211.5 kg/cm ²	4.5 Pints/Day 2 Liters/Day	9 Pints/Day 4 Liters/Day
1/4"	1,500 psi 105.5 kg/cm ²	7 Pints/Day 3.3 Liters/Day	14.5 Pints/Day 6.8 Liters/Day
3/8"	1,000 psi 70.5 kg/cm ²	18 Pints/Day 8.5 Liters/Day	36 Pints/Day 17 Liters/Day
1/2"	500 psi 35 kg/cm ²	32 Pints/Day 15 Liters/Day	64 Pints/Day 30 Liters/Day



Series 2200 Electric Driven Injection Pump

- 1/4 horsepower electric-driven motor (TENV)
- 316 stainless steel fluid end
- Simplex or duplex available
- Conduit connection
- Single or 3 phase
- Maximum discharge pressure 1,000 psi
- Maximum volume 120 gallons per day (duplex model)
- Built-in gear reducer available in 15, 30, or 60 strokes/minute
- Crosshead bearing supported on both ends
- Flow adjustable while running

Model Number	Plunger Size	Strokes per Minute	Maximum Output 1000 psi (70 kg/cm ²) per Head	
			Gallons per Day	Liters per Day
2204	3/16"	15	2.19 Gallons/Day	8.2 Liters/Day
		30	4.37 Gallons/Day	16.5 Liters/Day
		60	8.74 Gallons/Day	33.0 Liters/Day
2201	1/4"	15	3.84 Gallons/Day	14.5 Liters/Day
		30	7.68 Gallons/Day	29.0 Liters/Day
		60	15.36 Gallons/Day	58.1 Liters/Day
2203	3/8"	15	8.64 Gallons/Day	32.7 Liters/Day
		30	17.28 Gallons/Day	65.4 Liters/Day
		60	34.56 Gallons/Day	130.8 Liters/Day
2205	1/2"	15	15.36 Gallons/Day	58.1 Liters/Day
		30	30.72 Gallons/Day	116.2 Liters/Day
		60	61.44 Gallons/Day	232.5 Liters/Day



Series 2400 Electric Driven Injection Pump

- Maximum discharge pressure: 4,000 psi (276 bar) with 1/2" plunger
- Maximum volume: 1760 GPD (6,662 Liters) with 1-1/4" plunger
- Each fluid end is adjustable while running
- Simplex, duplex or quad configuration
- Available in 2 speeds: 30 or 60 strokes/minute
- 1 horsepower motor is standard (2 hp optional)
- 1 or 3 phase - TEFC or explosion proof
- Oil-less drive unit
- Plunger sizes: 1/2", 3/4", 1", 1-1/4"
- Flow adjustable while running with adjustable crosshead

Plunger Size	Strokes per Minute	Maximum Discharge Pressure		Volume Gallons (Liters) per Day per Head			
		psi	(bar)	Maximum		Minimum	
1/2"	30	4000	(275)	70	(265)	7	(26)
	60	4000	(275)	138	(522)	14	(52)
3/4"	30	3200	(220)	160	(605)	16.5	(62)
	60	3200	(220)	330	(1249)	33	(125)
1"	30	1000	(69)	260	(984)	25	(94)
	60	1000	(69)	510	(1930)	56	(212)
1-1/4"	30	500	(34)	440	(1665)	44	(166)
	60	500	(34)	880	(3331)	88	(333)



Series 2500 Electric Driven Injection Pump

- Maximum discharge pressure: 6,000 psi (414 bars) with 3/16" plunger
- Maximum volume 139 gallons per day (528 liters per day) with 1/2" plunger
- Each head is adjustable while running
- Available simplex, duplex, triplex, or quadruplex configurations
- Mix or match head sizes – pump the same or different chemicals
- Available in four stroke rates: 15, 30, 60, or 120 strokes per minute
- Each head is independently coupled- user friendly in the field
- 1/2 horsepower motor standard; optional 1 or 3 phase, TEFC or explosion proof, 50 or 60 Hz
- Available with 3/16", 1/4", 3/8", or 1/2" plunger

Plunger Size	Strokes per Minute	Maximum Discharge Pressure		Volume Gallons (Liters) per Day per Head			
		psi	(bar)	Maximum		Minimum	
3/16"	15	6000	(414)	2.4	(9)	.2	(.7)
	30	6000	(414)	4.9	(185)	0.5	(1.8)
	60	6000	(414)	9.8	(37)	1	(3.7)
	120	4000	(275)	18.7	(70.7)	1.9	(7.1)
1/4"	15	3200	(221)	4.3	(16.2)	0.4	(1.5)
	30	4000	(275)	8.6	(32.5)	0.9	(3.4)
	60	4000	(275)	17.3	(6.45)	1.7	(6.4)
	120	2100	(145)	34.6	(131)	3.5	(13.2)
3/8"	15	1450	(100)	9.8	(37)	1	(3.7)
	30	1800	(124)	19.6	(74.1)	2	(7.5)
	60	1700	(117)	39.2	(147.6)	3.9	(14.7)
	120	950	(65)	78.5	(297.1)	7.8	(29.5)
1/2"	15	820	(56)	17.4	(65.8)	1.7	(6.4)
	30	1025	(71)	34.8	(131.7)	3.5	(13.2)
	60	1000	(70)	69.7	(263.8)	7	(26.4)
	120	525	(36)	139.5	(528)	13.9	(52.6)

The Texsteam Series 2500 chemical injection pumps are electric driven, positive displacement pumps utilizing C-faced motors and common gear reducers. The gear reducers are available in 15, 30, 60, and 120 strokes per minute configurations. By utilizing even further flexibility of a wide variety of plunger sizes, the Series 2500 can fill many application requirements of different flows and pressures.

Series 2500 can have up to four, flow adjustable while running fluid ends, each driven off an eccentric cam gear that requires no oil.

OPTIONS: Ceramic plungers, which provide longer packing life, and a wide variety of packing are designed to meet the demands of many different chemical applications.



Series 4300 Electric Driven Injection Pump

- Positive Displacement
- Up to 8 pumping heads driven by a single motor
- Each pumping head capacity is field adjustable 0 to 100% while running
- Oil bath lubrication for long gear box life

Plunger Size	Maximum Discharge Pressure	Maximum Volume Output @ Gear Ratio		
		100:1	50:1	21:1
3/16"	5,000 psi 352 kg/cm ²	2.5 Gallons/Day 9.5 Liters/Day	5 Gallons/Day 19 Liters/Day	10 Gallons/Day 37.8 Liters/Day
1/4"	2,400 psi 169 kg/cm ²	5 Gallons/Day 19 Liters/Day	10 Gallons/Day 38.5 Liters/Day	20 Gallons/Day 74.5 Liters/Day
3/8"	1,200 psi 84 kg/cm ²	12 Gallons/Day 45.5 Liters/Day	23 Gallons/Day 86.5 Liters/Day	46 Gallons/Day 174 Liters/Day
1/2"	600 psi 42 kg/cm ²	21 Gallons/Day 79.5 Liters/Day	40 Gallons/Day 151 Liters/Day	80 Gallons/Day 302.5 Liters/Day
3/4"	300 psi 21 kg/cm ²	46 Gallons/Day 174 Liters/Day	91 Gallons/Day 345 Liters/Day	182 Gallons/Day 689 Liters/Day
1"	150 psi 10.5 kg/cm ²	81 Gallons/Day 307 Liters/Day	163 Gallons/Day 617 Liters/Day	325 Gallons/Day 1,229 Liters/Day



Series 3700 Gas/Pneumatic Driven Injection Pump

- Handles all types of solutions and chemicals
- Single or dual headed units available
- Field adjustable speed/volume control
- Operates with air/gas pressures as low as 5 psi
- Furnished with or without reservoirs

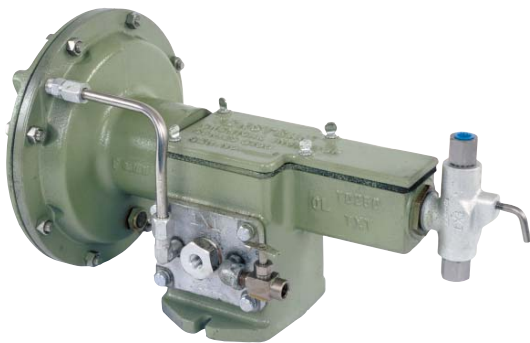
Plunger Size	Maximum Discharge Pressure	Maximum Volume Output	
		Simplex Unit	Duplex Unit
3/16"	3000 psi 211.5 kg/cm ²	8 Pints/Day 3.7 Liters/Day	16 Pints/Day 1.8 Liters/Day
1/4"	1,500 psi 105.5 kg/cm ²	14 Pints/Day 6.6 Liters/Day	28 Pints/Day 13.2 Liters/Day
3/8"	1,000 psi 70.5 kg/cm ²	36 Pints/Day 17 Liters/Day	72 Pints/Day 34 Liters/Day
1/2"	500 psi 35 kg/cm ²	60 Pints/Day 28.3 Liters/Day	120 Pints/Day 56.7 Liters/Day



Series 5000 Gas/Pneumatic Driven Injection Pump

- Designed for continuous operation
- Excellent for pumping chemicals, methanol, and corrosion inhibitors
- Field adjustable speed/volume control
- Simple modification can lower pumping rate to one stroke every five minutes
- Operates with air/gas pressures as low as 15 psi
- Adjustable for sour gas service
- Microswitch design available
- No oil required in housing design available

Plunger Size	Maximum Discharge Pressure	Maximum Volume Output
1/4"	10,000 psi 703 kg/cm ²	16 Gallons/Day 60.5 Liters/Day
3/8"	10,000 psi 703 kg/cm ²	43 Gallons/Day 162.5 Liters/Day
1/2"	10,000 psi 703 kg/cm ²	85 Gallons/Day 322 Liters/Day
3/4"	5,000 psi 352 kg/cm ²	160 Gallons/Day 605.5 Liters/Day
1"	3,000 psi 211 kg/cm ²	320 Gallons/Day 1,211 Liters/Day
1-1/4"	2,000 psi 141 kg/cm ²	500 Gallons/Day 1,892 Liters/Day



Series 5100 Gas/Pneumatic Driven Injection Pump

- Direct acting
- Powered by diaphragm motor with spring return
- Field adjustable speed/volume control
- Operates with air/gas pressures as low as 8 psi
- Adaptable for use in sour gas service areas

Plunger Size	Maximum Discharge Pressure	Maximum Volume Output
3/16"	1,500 psi 106 kg/cm ²	4.2 Gallons/Day 16 Liters/Day
1/4"	1,500 psi 106 kg/cm ²	7.5 Gallons/Day 28.5 Liters/Day
3/8"	1,500 psi 106 kg/cm ²	17 Gallons/Day 64.3 Liters/Day
1/2"	1,500 psi 106 kg/cm ²	32 Gallons/Day 121 Liters/Day

NOTE: High pressure heads available to 6,000 psi



Series 6100 Gas/Pneumatic Driven Injection Pump Direct or Double Acting

- Positive displacement pump
- Simplex or duplex offering
- Field adjustable speed/volume control
- Exhaust gas can be recovered to minimize gas consumption
- Heads made from cast steel or 316 stainless steel

Plunger Size	Maximum Discharge Pressure	Maximum Volume Output
1-1/4"	9,000 psi 634 kg/cm ²	1.5 Gallons/Minute 6 Liters/Minute
2-3/4"	1,800 psi 127 kg/cm ²	10 Gallons/Minute 37 Liters/Minute
4"	900 psi 63.5 kg/cm ²	20 Gallons/Minute 75 Liters/Minute



Series 9000 Gas/Pneumatic Driven Double Diaphragm Utility Pump Injection Pump

- Can operate completely submerged
- Designed to pump liquids of various densities
- Easily handles 1/4" solids, abrasives and fibrous materials
- Air or gas operated at supply pressures from 5 to 100 psi
- Needs no priming for suction lifts up to 14 feet of water without foot valve and to 29 feet of water with foot valve
- Features strong handle, sturdy base, a power control valve for close discharge volume control and a power air safety valve
- Furnished with or without reservoirs

Specifications

Min./Max. power gas pressure	5/100 psi
Maximum recommended gas exhaust back pressure.....	20 psi
Maximum recommended gas consumption	50 cfm
Maximum recommended fluid discharge pressure	60 psi
Maximum fluid suction lift.....	29 Ft. Water
Min./Max. recommended fluid capacity	1/60 gpm
Max. recommended strokes/minute	250 spm
Power gas safety valve set at	125psi



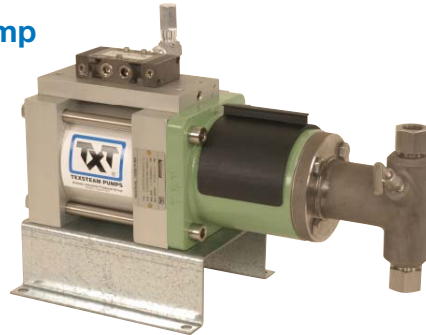
MX-3 Gas/Pneumatic Driven Injection Pump

- Lightweight
- Adjustable flow rate
- Positive cycle operation
- Easily field serviceable
- 316 SS fluid end
- 1 to 60 strokes/minute
- Simplex or duplex offering
- Can be mounted vertically or horizontally
- Low gas consumption
- Adjustable V packing
- Capable of handling dirty/sour gas
- Up to 62 gallons (235 liters) per day
- Discharge pressures to 10,000 psi (690 bar)
- Differential pressure: 145 psi (10 bar) maximum
30 psi (2.1 bar) minimum

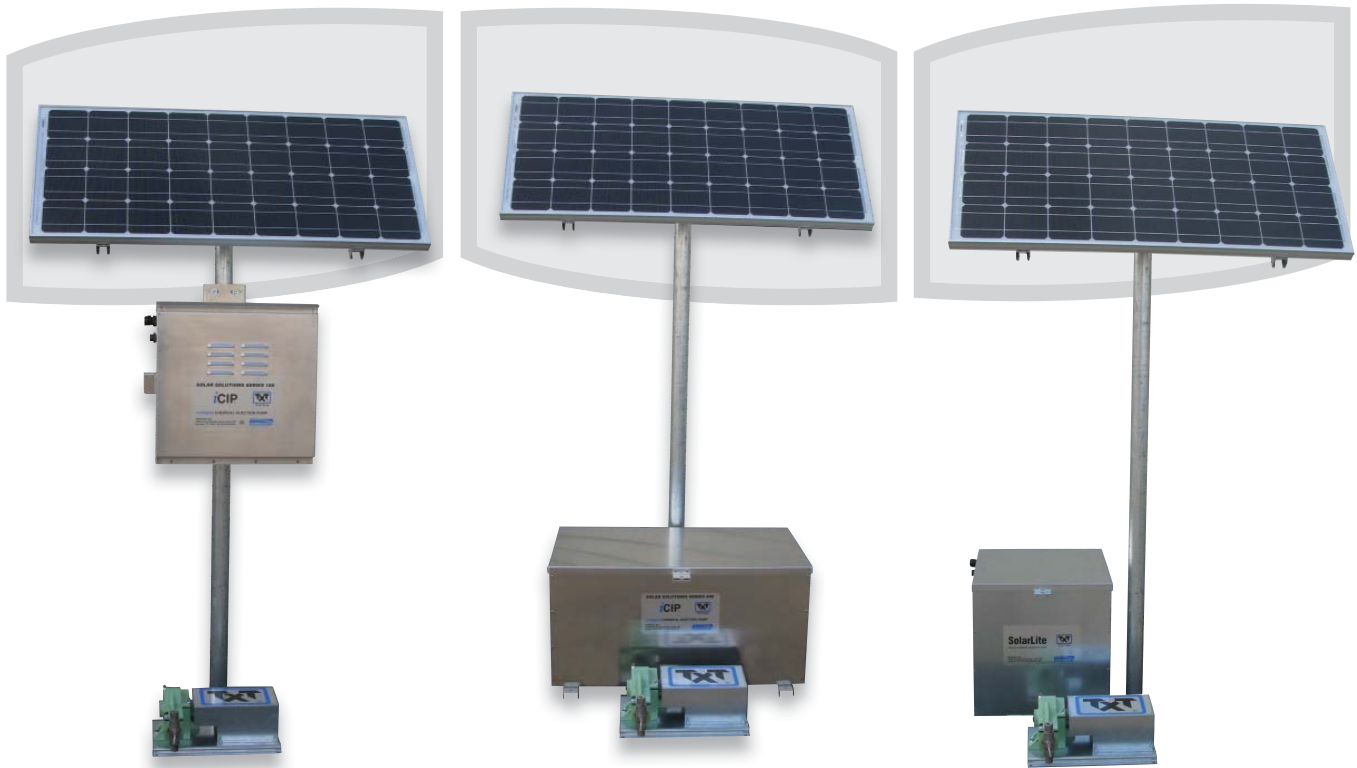
Model Number	Plunger Size	Maximum Discharge Pressure		Volume Gallons per Day (Liters)	
		psi	(bar)	Maximum	Minimum
MX3-4	3/16"	10,000	(690)	8 Gallons/Day 30.3 Liters/Day	0.11 Gallons/Day 0.42 Liters/Day
MX3-1	1/4"	10,000	(690)	14.5 Gallons/Day 54.9 Liters/Day	0.2 Gallons/Day 0.75 Liters/Day
MX3-3	3/8"	6,000	(414)	32.1 Gallons/Day 121.5 Liters/Day	0.6 Gallons/Day 2.27 Liters/Day
MX3-5	1/2"	3,500	(241)	62 Gallons/Day 234.7 Liters/Day	1.1 Gallons/Day 4.16 Liters/Day

MX-5 Gas/Pneumatic Driven Injection Pump

- Lightweight
- Adjustable packing
- Easily field serviceable
- 1 to 60 strokes per minute
- 1-62 gph
- Simplex or duplex offering



Model Number	Simplex GPH/LPH		Duplex GPH/LPH		Pressure psi/barg Maximum	Volume per Stroke CC	Air Consumption SCF/G
	Maximum	Minimum	Maximum	Minimum			
MX55 1/2" Plunger							
@ 50 psi/3.45 bar	5.2/19.7	1.04/3.9	1.04/39.4	1.9/7.2	3000/310	6.1	
@ 100 psi/6.9 bar	5.4/20.5	1.04/3.9	10.4/39.4	1.9/7.2	8000/551	6.1	208
@ 150 psi/10 bar	5.4/20.5	1.04/3.9	10.4/39.4	1.9/7.2	10000/689	6.1	
MX56 3/4" Plunger							
@ 50 psi/3.45 bar	12.9/49	2.1/7.9	23/87	3.75/14.2	1300/89	13.76	
@ 100 psi/6.9 bar	12.9/49	2.1/7.9	23/87	3.75/14.2	3500/241	13.76	92
@ 150 psi/10 bar	12.9/49	2.1/7.9	23/87	3.75/14.2	5500/380	13.76	
MX57 1" Plunger							
@ 50 psi/3.45 bar	23/87	9.4/35.6	42/159	14.6/55.3	750/52	24.44	
@ 100psi/6.9 bar	23/87	9.4/35.6	42/159	14.6/55.3	2000/138	24.44	52
@ 150psi/10 bar	23/87	9.4/35.6	42/159	14.6/55.3	3100/214	24.44	
MX58 1-1/4" Plunger							
@ 50 psi/3.45 bar	34/128	14.6/55.3	62.5/237	27/102.3	480/33	38.2	
@ 100 psi/6.9 bar	34/128	14.6/55.3	62.5/237	27/102.3	1250/86	38.2	34
@ 150 psi/10 bar	34/128	14.6/55.3	62.5/237	27/102.3	2000/138	38.2	



Solar Solutions® iCIP® Intelligent Chemical Injection Pumps

Standard Features

- Go green, environmentally friendly – zero emissions chemical injection pump
- Ideal for remote locations – does not require on-site power source
- Wide variety of volume and pressure capabilities
- Microprocessor based programmable controller
- Continuous injection provides even dispersion of chemical
- System protections – utilize fault management system
 - Low battery shutdown, motor overload protection and others
 - Fuse protection
- Certified and approved to CSA (Canadian) and UL (USA) standards:
 - Class I Division II – Groups C & D
 - Class I Division I – Groups C & D
- NEMA 3R battery enclosure that houses control panel and batteries
- Quiet operations
- 24 month system warranty - superior to others in the industry



About Dresser® Products

Dresser brand products are highly engineered, technically superior and are designed to help global customers meet and exceed requirements for mission critical energy applications.

About Dresser, Inc.

Dresser, Inc. is a leader in providing highly engineered infrastructure products for the global energy industry. The company has leading positions in a broad portfolio of products, including valves, actuators, meters, switches, regulators, piping products, natural gas-fueled engines, retail fuel dispensers and associated retail point-of-sale systems, and air and gas handling equipment. Leading brand names within the Dresser portfolio include Dresser Wayne® retail fueling systems, Waukesha® natural gas-fired engines, Masoneilan® control valves, Consolidated® pressure relief valves, and Roots® blowers. It has manufacturing and customer service facilities located strategically worldwide and a sales presence in more than 100 countries.



Corporate Headquarters

Phone: 832.590.2303
Email: txtpumps@dresser.com

US Regional Sales Office

Phone: 832.590.2133
Email: Charlie.Parker@Dresser.com

Dresser, Inc.

16240 Port Northwest Drive
Houston, Texas 77041-2645
Ph: 832.590.2306 Fax: 713.849.2879
Toll Free Phone: 800.945.9898
Email: txtpumps@dresser.com

Canada Regional Sales Office

Phone: 780.288.7778
Email: rob.irvine@dresser.com

Latin America Regional Sales Office

Phone: 832.590.2421
E-mail: hernan.villalobos@dresser.com

Europe, Africa, Middle East Regional Sales Office

Phone: +44 (0) 2380875600
Email: nick.barker@dresser.com

Asia/Pacific Regional Sales Office

Phone : +60 3 22672600
E-mail: gerard.stenson@dresser.com

