

Model 402E & 412E

Powreactor Dome Regulator for Pressure Reducing Service: 3600 psi & 6000 psi Pressure Rating: Carbon Steel

General Specifications

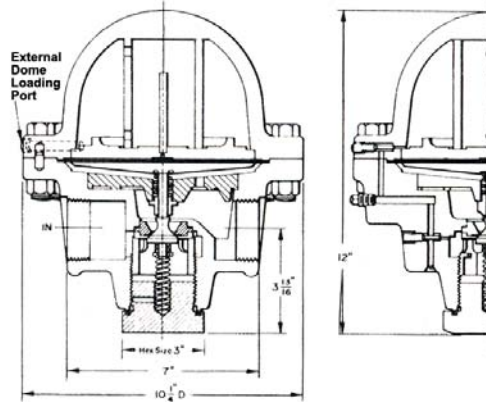
Control Pressure is Adjustable to any Level up to Max. Outlet Rating
 Internally Dome Loaded thru Integral Needle Valves
 External Dome Loading Connections: 1/8" FNPT
 Internal Sensing
 External Sensing Not Available
 End Connections: Fig. 11487 & 11489 2" FNPT
 Fig. 11488 1 1/2" FNPT
 Weight: 80 lbs. (Approx.)

Material Specifications

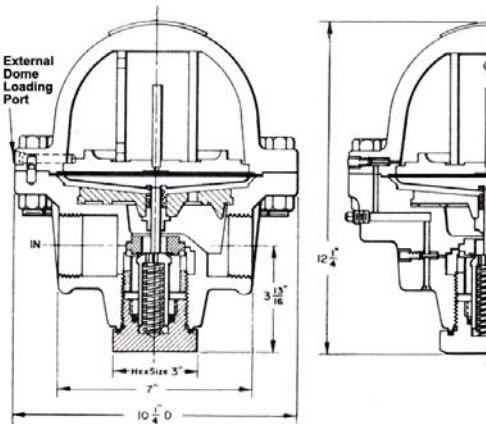
Body: Forged Carbon Steel
 Dome: Forged Carbon Steel
 Trim: 18/8 CReS
 Diaphragm: Nitrile Rubber
 Valve Seat Seal & Gasket: PCTFE
 Body Plug Gasket: PCTFE

Ordering Information

Order by Model Number and Complete Coded Figure Number. See Example Below.



Model 402E Basic Fig. No. 11487 & 11488



Model 412E Balanced Valve - 1 1/2" Only
 Basic Fig. No. 11487 & 11488

Figure Number	Model Number	Max. Inlet Pressure	Max. Outlet Pressure	End Connection	Orifice Size	Max C	Temperature
11487P106A	402E	3600	1500	2" FNPT	1/2"	4.0	0°F to +165°F
11487P107A	402E	3600	1500	2" FNPT	3/4"	10.0	0°F to +165°F
11487P108A	402E	3600	1500	2" FNPT	1"	12.0	0°F to +165°F
11487P109A	412E	3600	1500	2" FNPT	1 1/2"	20.0	0°F to +165°F
11487P088A	402E	6000	3000	1 1/2" FNPT	1/2"	4.0	0°F to +165°F
11487P086A	402E	6000	3000	1 1/2" FNPT	1"	12.0	0°F to +165°F

Note: 1. For flow rate information refer to capacity chart in Powreactor Bulletin
 2. This regulator is not compatible with Super Cleaning procedures. Refer to equivalent Model 402E & 412E, or consult factory for more details.

RedQ

Dresser, Inc.

2822 S. 1030 W.
 Salt Lake City, Utah 84119
 Phone: 801.487.2225 Fax: 801.487.2587
 www.mooneycontrols.com

