

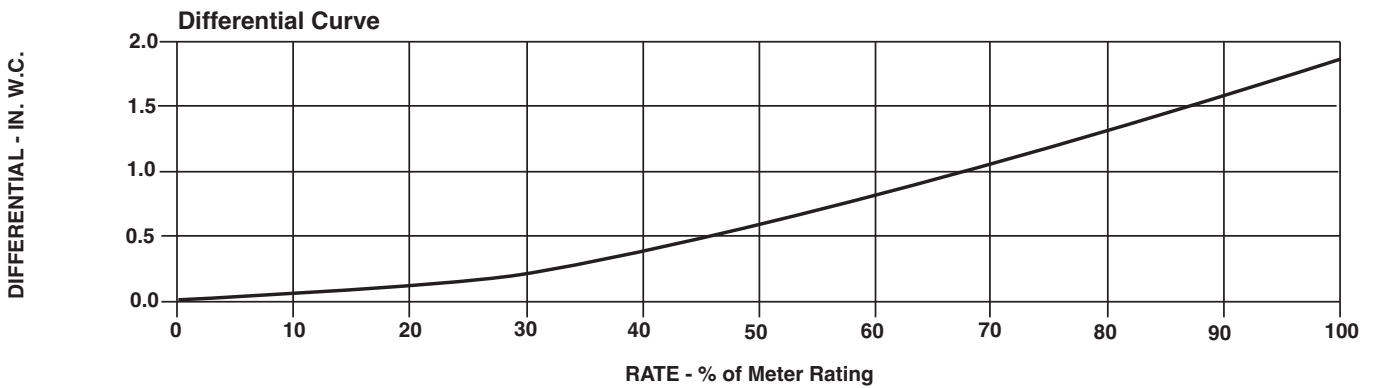
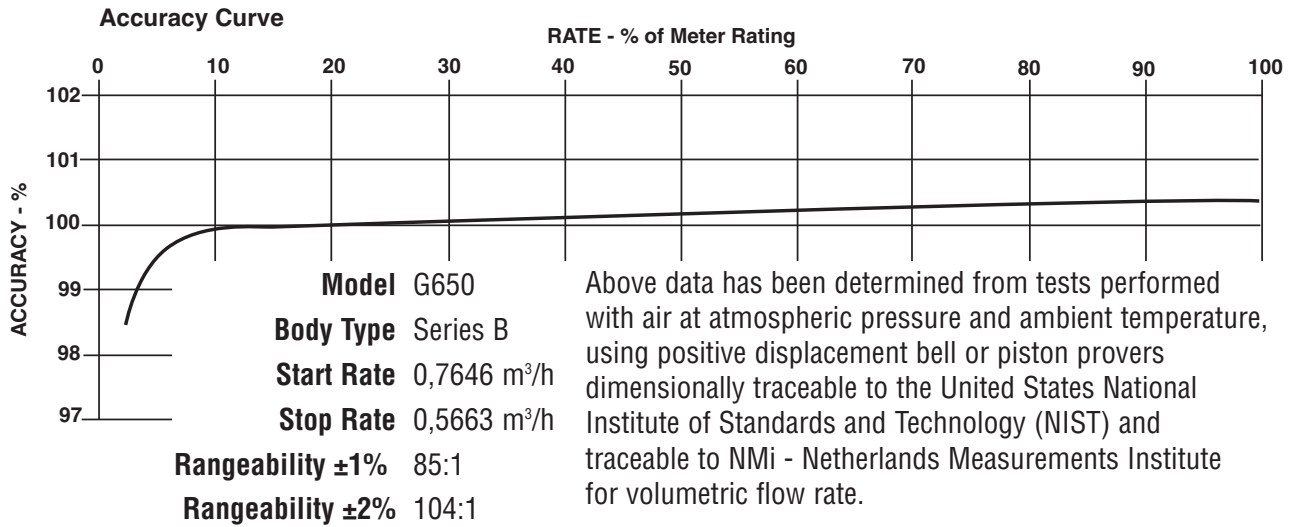


G650 ROOTS® Meter

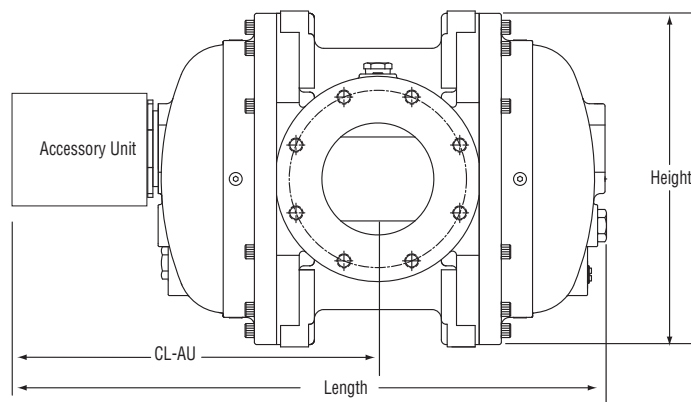
	UNITS	Metric/DIN	UNITS	Metric/ANSI
Temperature Range	deg. C	-40 to +70	deg. C	-40 to +70
Base Rating (Q Max.)	m ³ /h	1000	m ³ /h	1000
Max. Operating Pressure (MAOP)	kPa	12	kPa	12
Leak Test (125% MAOP)	kPa	15	kPa	15
Static Test (2 x MAOP)	kPa	24	kPa	24
Rangeability +/- 1%	ratio	85:1	ratio	85:1
Rangeability +/- 2%	ratio	104:1	ratio	104:1
Start Rate	m ³ /h	0,7646	m ³ /h	0,7646
Stop Rate	m ³ /h	0,5663	m ³ /h	0,5663
Flow Rate @ 0.5" w.c., Gas	m ³ /h	583,3	m ³ /h	583,3
Avg. Differential, 100% Flow	mbar	4,7	mbar	4,7
Max. Pressurization Rate	kPa/sec	35	kPa/sec	35
Max. Operating Speed	rpm	1060	rpm	1060
Gear Ratio	ratio	63,5771:1	ratio	63,5771:1
Displaced Volume/Revolution	m ³	0,015732	m ³	0,015732
Drive Rate	m ³ /rev	1,0	m ³ /rev	1,0
Min. Odometer Reading	m ³	0,02	m ³	0,02
Odometer Turnover	yrs.	1,14	yrs.	1,14
Nominal Pipe Size	mm	150	mm	150
Flange-to-Flange	mm	457,2	mm	457,2
Flange Connection	DIN	150	ANSI	150#FF
Bolts per Flange	qty.	8	qty.	8
Bolt Size ¹	mm	M20	in.	3/4 - 10
Flange Bolt Hole Depth	mm	41,2	mm	41,2
Bolt Torque: Lubricated/Non-Lub.	N-m	108	N-m	108
Restricting Orifice (120%)	mm	48,419	mm	48,419
Oil Capacity - Side Inlet	ml	1,189	ml	1,189
Oil Capacity - Top Inlet	ml	4554	ml	4554
Net Weight	kg	111	kg	111
Shipping Weight	kg	124	kg	124
Carton Size	cm	112 x 61 x 56	cm	112 x 61 x 56

NOTES:

¹ Bolt Length varies by application.



G650	Overall Length		Overall Height		Width (Flange/Flange)		Centerline to Accessory End (CL-AU)		Request Detailed Drawing Number
	inches	mm	inches	mm	inches	mm	inches	mm	
	32-23/64	822	18	458	18	458	17-31/64	444	D057674-000



**Roots Meters & Instruments
Dresser, Inc.**

16240 Port Northwest Drive
Houston, Texas 77041-2645 USA
Inside US Ph: 800.521.1114
Outside US Ph: 832.590.2303

Fax: 800.335.5224
Fax: 832.590.2494



www.dresser.com