



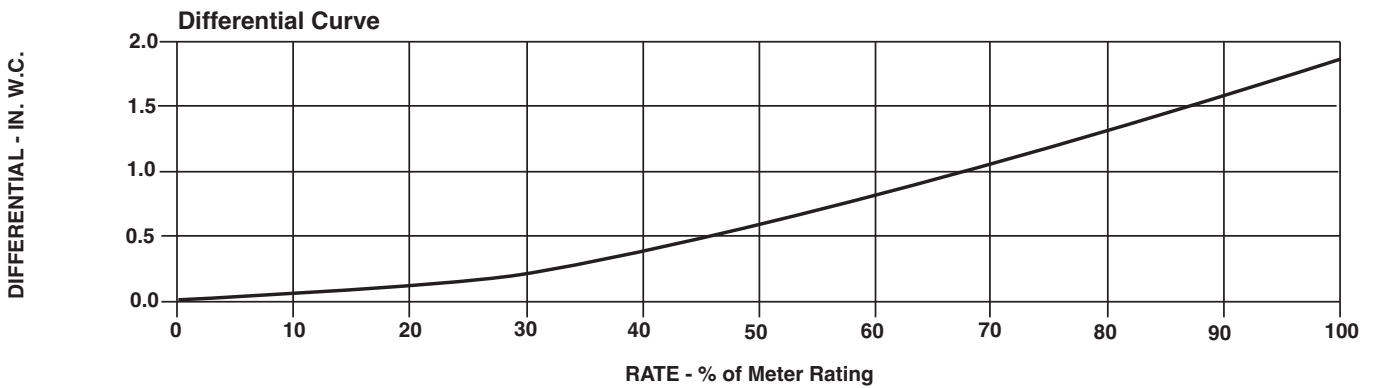
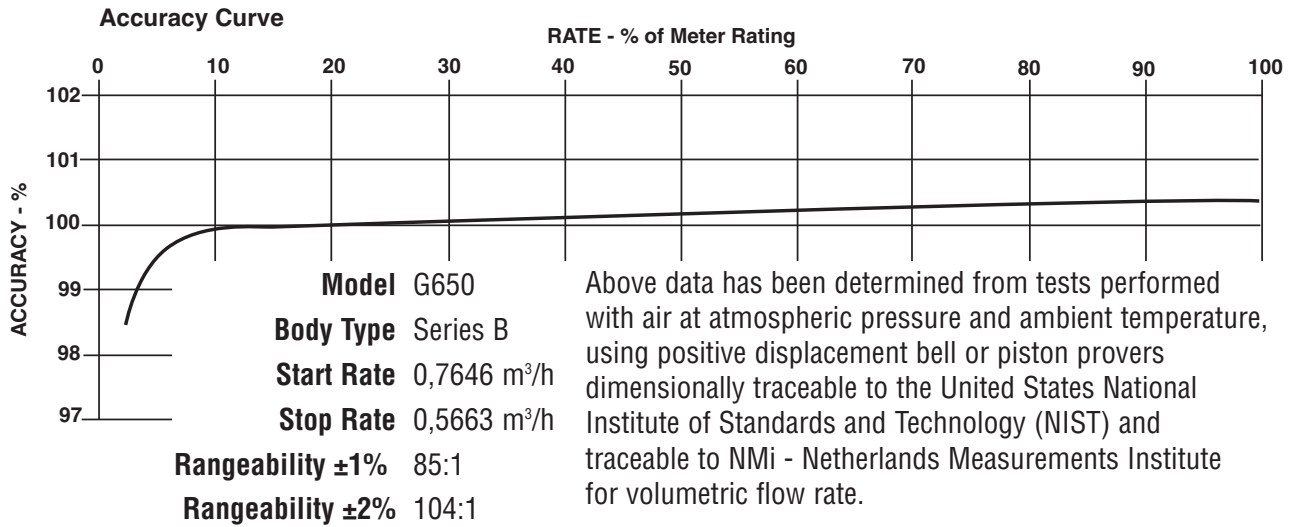
SERIES B3: G650 ROOTS® Meter

	UNITS	Metric/DIN	UNITS	Metric/ANSI
Temperature Range	deg. C	-40 to +60	deg. C	-40 to +60
Base Rating (Q Max.)	m ³ /h	1000	m ³ /h	1000
Max. Operating Pressure (MAOP)	kPa	12	kPa	12
Leak Test (125% MAOP)	kPa	15	kPa	15
Static Test (2 x MAOP)	kPa	24	kPa	24
Rangeability +/- 1%	ratio	85:1	ratio	85:1
Rangeability +/- 2%	ratio	104:1	ratio	104:1
Start Rate	m ³ /h	0,7646	m ³ /h	0,7646
Stop Rate	m ³ /h	0,5663	m ³ /h	0,5663
Flow Rate @ 0.5" w.c., Gas	m ³ /h	583,3	m ³ /h	583,3
Avg. Differential, 100% Flow	mbar	4,7	mbar	4,7
Max. Pressurization Rate	kPa/sec	35	kPa/sec	35
Max. Operating Speed	rpm	1060	rpm	1060
Gear Ratio	ratio	63,5771:1	ratio	63,5771:1
Displaced Volume/Revolution	m ³	0,015732	m ³	0,015732
Drive Rate, CD	m ³ /rev	1,0	m ³ /rev	1,0
Min. Odometer Reading	m ³	0,02	m ³	0,02
Odometer Turnover	yrs.	1,14	yrs.	1,14
Nominal Pipe Size	mm	150	mm	150
Flange-to-Flange	mm	457,2	mm	457,2
Flange Connection	DIN	150	ANSI	150#FF
Bolts per Flange	qty.	8	qty.	8
Bolt Size ¹	mm	M20	in.	3/4 - 10
Flange Bolt Hole Depth	mm	41,2	mm	41,2
Bolt Torque: Lubricated/Non-Lub.	N-m	108	N-m	108
Restricting Orifice (120%)	mm	48,419	mm	48,419
Oil Capacity - Side Inlet	ml	1,189	ml	1,189
Oil Capacity - Top Inlet	ml	4554	ml	4554
<i>Counter Version (CTR)²</i>				
Net Weight	kg	111	kg	111
Shipping Weight	kg	124	kg	124
Carton Size	cm	120 x 69 x 66	cm	120 x 69 x 66
<i>Counter with Instrument Drive (CD)²</i>				
Net Weight	kg	112,0	kg	112,0
Shipping Weight	kg	125,7	kg	125,7
Carton Size	cm	120 x 69 x 66	cm	120 x 69 x 66

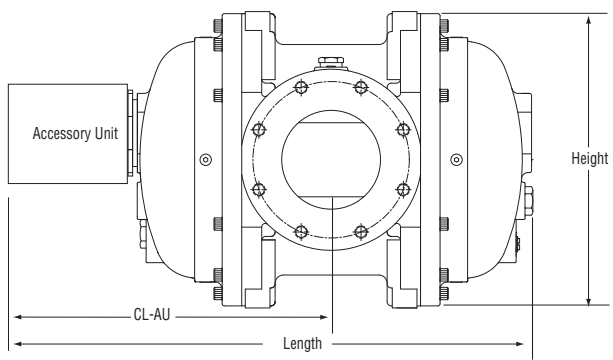
NOTES:

¹ Bolt Length varies by application.

² Weights and dimensions available for CPS upon request.



G650 Series B3	Overall Length		Overall Height		Width (Flange/Flange)		Centerline to Accessory End (CL-AU)		Request Detailed Drawing Number
	inches	mm	inches	mm	inches	mm	inches	mm	
CTR	34-5/8	879	18	457	18	457	19-21/32	499	D054750-001
CD	38-3/16	967	18	457	18	457	23-7/32	590	D054433-001
ICPS	36-11/32	923	18	457	18	457	21-3/8	543	D057701-000
IMC/W2	39	991	18	457	18	457	24-1/32	610	D057732-000



To order
Specify: Meter Series, Size and Type (i.e., ROOTS Meter Series G650 CD).
For CD, specify Inlet (Top or Side) and ID Rotation (CW-B or CCW-A).
For Pulsar, specify Single or Dual Connectors and Connector Type (MS Circular, Conduit or Cable Gland).
For more specific ordering information on the electronic products, request: TS:SSP or TS:MC2.
Contact the factory for other available information, options, or special requests.

Roots Meters & Instruments
Dresser, Inc.
16240 Port Northwest Drive
Houston, Texas 77041-2645 USA
Inside US Ph: 800.521.1114 Fax: 800.335.5224
Outside US Ph: 832.590.2303 Fax: 832.590.2494



www.dresser.com