



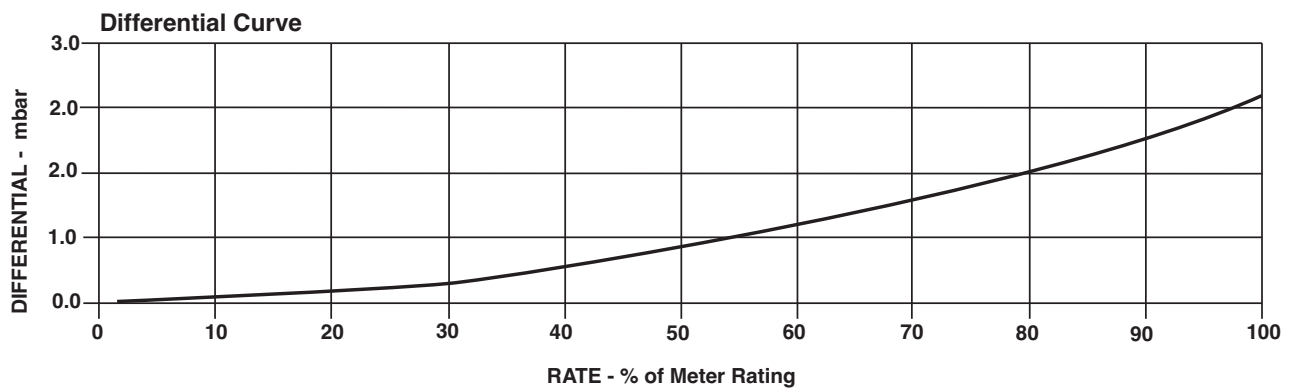
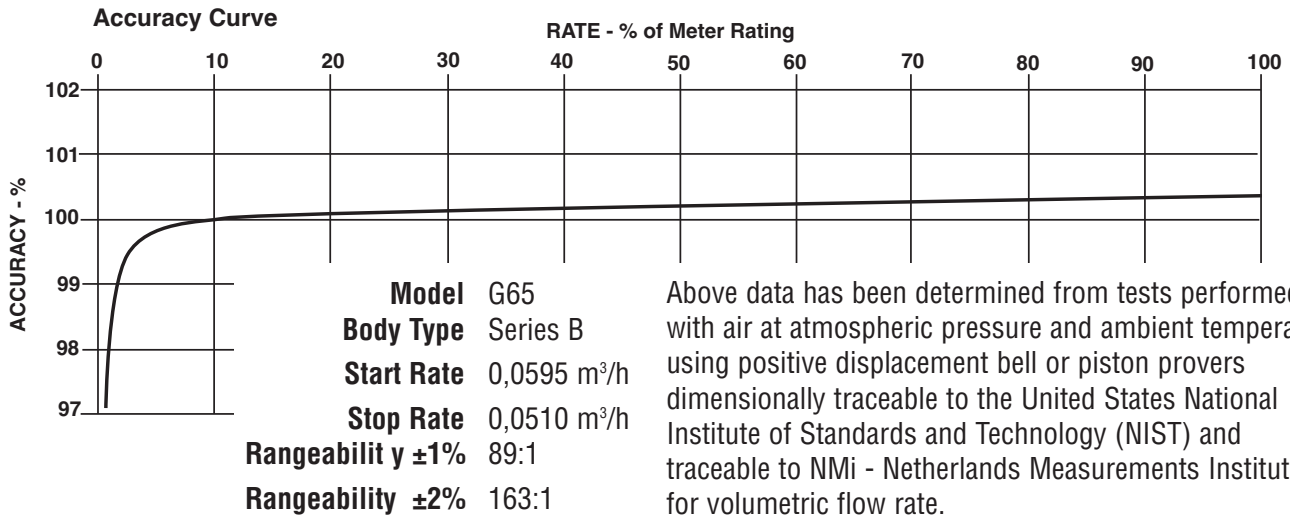
SERIES B3: G65 ROOTS® Meter

	UNITS	Metric/DIN	UNITS	Metric/ANSI
Temperature Range	deg. C	-40 to +60	deg. C	-40 to +60
Base Rating (Q Max.)	m³/h	100	m³/h	100
Max. Operating Pressure (MAOP)	bar	12	bar	12
Leak Test (125% MAOP)	bar	15	bar	15
Static Test (2 x MAOP)	bar	24	bar	24
Rangeability +/- 1%	ratio	89:1	ratio	89:1
Rangeability +/- 2%	ratio	163:1	ratio	163:1
Start Rate	m³/h	0,0595	m³/h	0,0595
Stop Rate	m³/h	0,0510	m³/h	0,0510
Flow Rate @ 1,25 mbar, Gas	m³/h	73,1	m³/h	73,1
Avg. Differential, 100% Flow	mbar	3,2	mbar	3,2
Max. Pressurization Rate	kPa/sec	35	kPa/sec	35
Max. Operating Speed	rpm	2350	rpm	2350
Gear Ratio	ratio	141,1764:1	ratio	141,1764:1
Displaced Volume/Revolution	m³	0,000708	m³	0,000708
Drive Rate, CD	m³/rev	0,1	m³/rev	0,1
Min. Odometer Reading	m³	0,002	m³	0,002
Odometer Turnover	yrs.	1,14	yrs.	1,14
Nominal Pipe Size	mm	50	mm	50
Flange-to-Flange	mm	172	mm	172
Flange Connection	DIN	DN 50	ANSI	150#FF
Bolts per Flange	qty.	4	qty.	4
Bolt Size ¹	mm	M16	in.	5/8 - 11
Flange Bolt Hole Depth	mm	23,8	mm	23,8
Bolt Torque: Lubricated/Non-Lub.	N-m	74/81	N-m	74/81
Restricting Orifice (120%)	mm	9,525	mm	9,525
Oil Capacity – Side Inlet	ml	37	ml	37
Oil Capacity – Top Inlet	ml	226	ml	226
<i>Counter Version (CTR)²</i>				
Net Weight	kg	13	kg	13
Shipping Weight	kg	14	kg	14
Carton Size	cm	69 x 28 x 23	cm	69 x 28 x 23
<i>Counter with Instrument Drive (CD)²</i>				
Net Weight	kg	15	kg	15
Shipping Weight	kg	17	kg	17
Carton Size	cm	79 x 38 x 33	cm	79 x 38 x 33

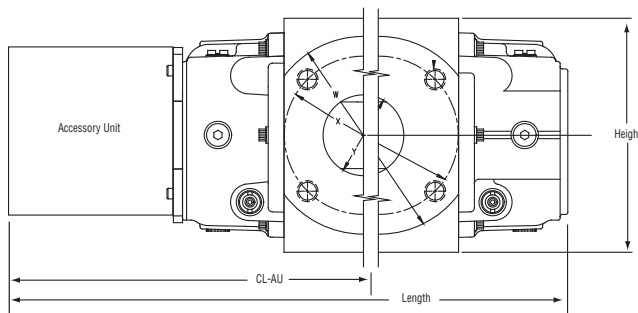
NOTES:

¹ Bolt Length varies by application.

² Weights and dimensions available for CPS upon request.



G65 Series B3	Overall Length		Overall Height		Width (Flange/Flange)		Centerline to Accessory End (CL-AU)		Request Detailed Drawing Number
	inches	mm	inches	mm	inches	mm	inches	mm	
CTR	17-1/16	433	6-31/32	177	6-3/4	172	10-13/16	274	D054517-000
CD	20-31/32	533	6-31/32	177	6-3/4	172	14-23/32	374	D054431-000
ICPS	18-5/8	473	6-31/32	177	6-3/4	172	12-3/8	314	D056900-000
IMC/C2	20-5/8	524	6-31/32	177	6-3/4	172	14-3/8	365	D056486-000
IMC/W2	21-5/8	549	6-31/32	177	6-3/4	172	15-3/8	391	D056702-000



To order

Specify: Meter Series, Size and Type (i.e., ROOTS Meter Series B3 G65 CD).
 For CD, specify Inlet (Top or Side) and ID Rotation (CW-B or CCW-A).
 For Pulsar, specify Single or Dual Connectors and Connector Type (MS Circular, Conduit or Cable Gland).
 For more specific ordering information on the electronic products, request: TS:SSP, TS:IMC/C2, or TS:IMC/W2.
 Contact the factory for other available information, options, or special requests.

**Roots Meters & Instruments
 Dresser, Inc.**

16240 Port Northwest Drive
 Houston, Texas 77041-2645 USA
 Inside US Ph: 800.521.1114 Fax: 800.335.5224
 Outside US Ph: 832.590.2303 Fax: 832.590.2494



www.dresser.com