



SERIES B3: G16 ROOTS® Meter

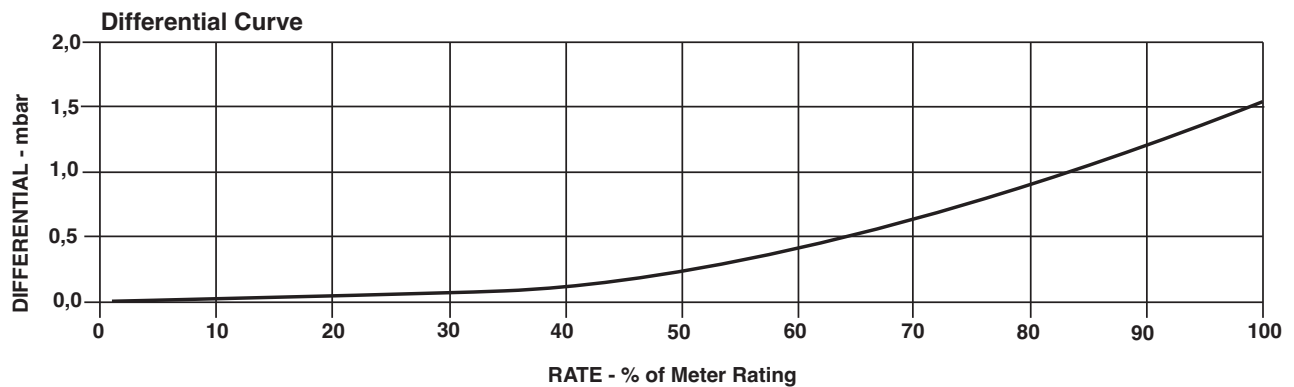
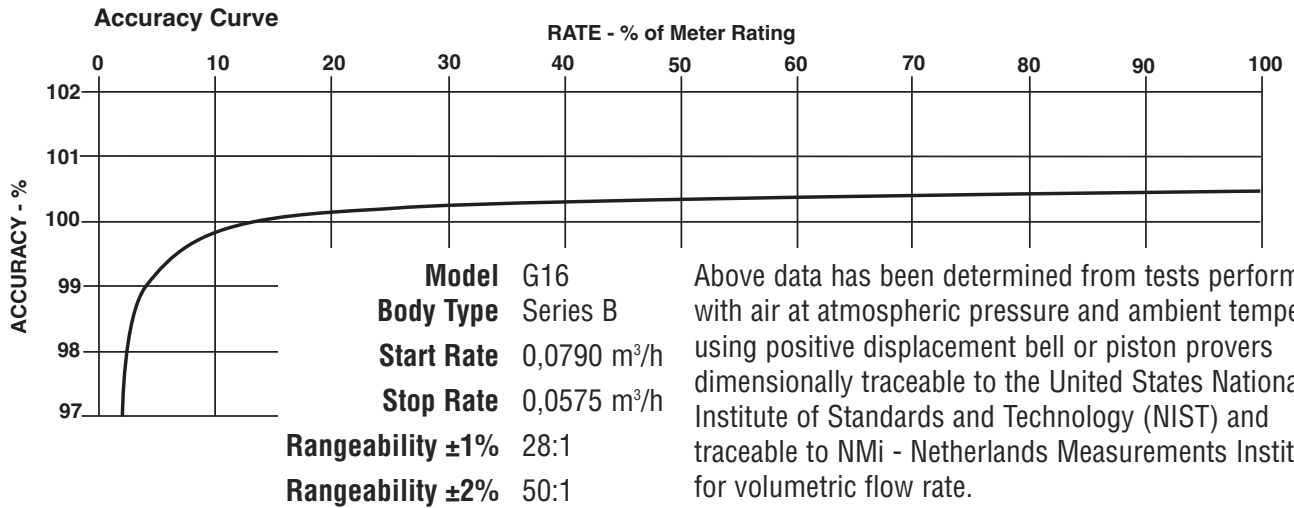
	UNITS	Metric/DIN	UNITS	Meter/ANSI
Temperature Range	deg. C	-40 to +60	deg. C	-40 to +60
Base Rating (Q Max.)	m ³ /h	25,0	m ³ /h	25,0
Max. Operating Pressure (MAOP) ¹	bar	12	bar	12
Leak Test (125% MAOP)	bar	15	bar	15
Static Test (2 x MAOP)	bar	24	bar	24
Rangeability +/- 1%	ratio	28:1	ratio	28:1
Rangeability +/- 2%	ratio	50:1	ratio	50:1
Start Rate	m ³ /h	0,0790	m ³ /h	0,0790
Stop Rate	m ³ /h	0,0575	m ³ /h	0,0575
Flow Rate @ 1,25 mbar, Gas	m ³ /h	22,6	m ³ /h	22,6
Avg. Differential, 100% Flow	mbar	1,6	mbar	1,6
Max. Pressurization Rate	kPa/sec	35	kPa/sec	35
Max. Operating Speed	rpm	1990	rpm	1990
Gear Ratio	ratio	476,4705:1	ratio	476,4705:1
Displaced Volume/Revolution	m ³	0,000210	m ³	0,00021
Drive Rate, CTR, CD	m ³ /rev	0,1	m ³ /rev	0,1
Min. Odometer Reading	m ³	0,002	m ³	0,002
Odometer Turnover	yrs.	4,50	yrs.	4,50
Nominal Pipe Size	mm	50	mm	50
Flange-to-Flange	mm	172	mm	172
Flange Connection	DIN	DN 50	ANSI	150#FF
Bolts per Flange	qty.	4	qty.	4
Bolt Size ²	mm	M16	in.	5/8 - 11
Flange Bolt Hole Depth	mm	23,8	mm	23,8
Bolt Torque: Lubricated/Non-Lub.	N-m	74/81	N-m	74/81
Restricting Orifice (120%)	mm	7,144	mm	7,144
Oil Capacity – Side Inlet	ml	24	ml	24
Oil Capacity – Top Inlet	ml	89	ml	89
<i>Counter Version (CTR)³</i>				
Net Weight	kg	8	kg	8
Shipping Weight	kg	10	kg	10
Carton Size	cm	58 x 28 x 23	cm	58 x 28 x 23
<i>Counter with Instrument Drive (CD)³</i>				
Net Weight	kg	8	kg	8
Shipping Weight	kg	12	kg	12
Carton Size	cm	66 x 35 x 33	cm	66 x 35 x 33

NOTES:

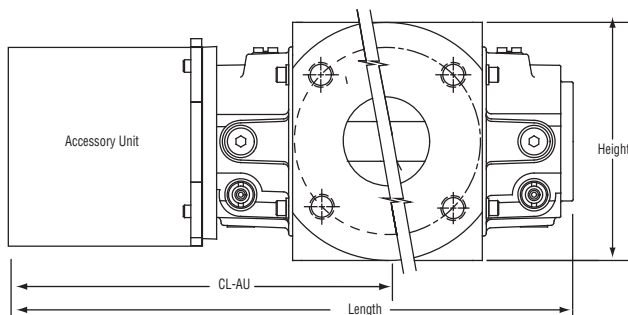
¹ Available with 200 psig (13.8 bar) rating.

² Bolt Length varies by application.

³ Weights and dimensions available for CPS upon request.



G16 Series B3	Overall Length		Overall Height		Width (Flange/Flange)		Centerline to Accessory End (CL-AU)		Request Detailed Drawing Number
	inches	mm	inches	mm	inches	mm	inches	mm	
CTR	13-15/16	354	6	153	6-3/4	172	9-1/4	235	D054516-000
CD	17-9/16	446	6-9/32	160	6-3/4	172	13-1/8	333	D054430-000
ICPS	15-5/16	389	6	153	6-3/4	172	10-27/32	275	D056899-000
IMC/C2	19-23/32	501	6	153	6-3/4	172	15-1/32	382	D056485-000
IMC/W2	19-1/4	489	6	153	6-3/4	172	14-9/16	370	D056701-000



To order

Specify: Meter Series, Size and Type (i.e., ROOTS Meter Series B3 G16 CD).

For CD, specify Inlet (Top or Side) and ID Rotation (CW-B or CCW-A).

For Pulser, specify Single or Dual Connectors and Connector Type (MS Circular, Conduit or Cable Gland).

For more specific ordering information on the electronic products, request: TS:SSP, TS:IMC/C2 or TS:IMC/W2.

Contact the factory for other available information, options, or special requests.

Roots Meters & Instruments Dresser, Inc.

16240 Port Northwest Drive
Houston, Texas 77041-2645 USA
Inside US Ph: 800.521.1114
Outside US Ph: 832.590.2303

Fax: 800.335.5224
Fax: 832.590.2494



www.dresser.com