



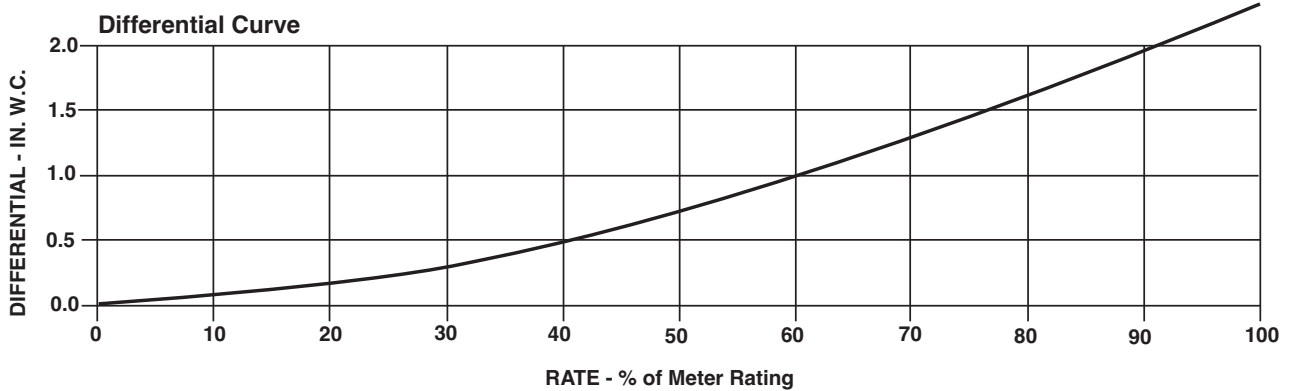
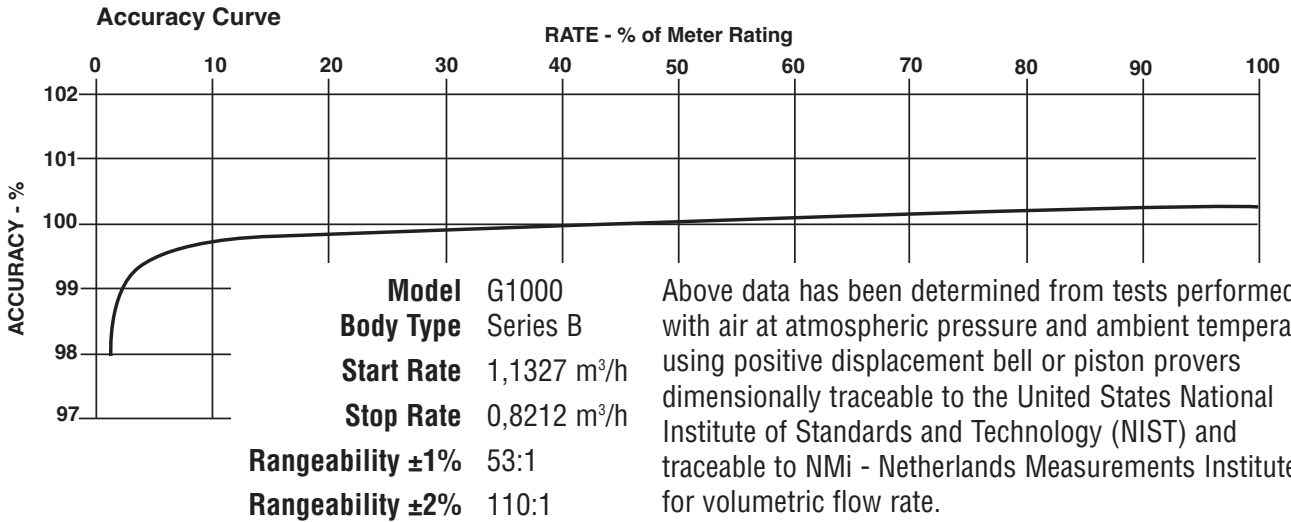
SERIES B3: G1000 ROOTS® Meter

	UNITS	Metric/DIN	UNITS	Metric/ANSI
Temperature Range	deg. C	-40 to +60	deg. C	-40 to +60
Base Rating (Q Max.)	m³/h	1600	m³/h	1600
Max. Operating Pressure (MAOP)	bar	12	bar	12
Leak Test (125% MAOP)	bar	15	bar	15
Static Test (2 x MAOP)	bar	24	bar	24
Rangeability +/- 1%	ratio	53:1	ratio	53:1
Rangeability +/- 2%	ratio	110:1	ratio	110:1
Start Rate	m³/h	1,1327	m³/h	1,1327
Stop Rate	m³/h	0,8212	m³/h	0,8212
Flow Rate @ 1,25 mbar, Gas	m³/h	651,3	m³/h	651,3
Avg. Differential @ 100% Flow	mbar	5,5	mbar	5,5
Max. Pressurization Rate	kPa/sec	35	kPa/sec	35
Max. Operating Speed	rpm	1355	rpm	1355
Gear Ratio	ratio	508,3120:1	ratio	508,3120:1
Displaced Volume/Revolution	m³	0,019664	m³	0,01966
Drive Rate, CD	m³/rev	10,0	m³/rev	10,0
Min. Odometer Reading	m³	0,020	m³	0,020
Odometer Turnover	yrs.	0,76	yrs.	0,76
Nominal Pipe Size	mm	200	mm	200
Flange-to-Flange	mm	533,4	mm	533,4
Flange Connection	DIN	DN 200	ANSI	150#FF
Bolts per Flange	qty.	12	qty.	12
Bolt Size ¹	mm	M20	in.	3/4 - 10
Flange Bolt Hole Depth	mm	41,2	mm	41,2
Bolt Torque: Lubricated/Non-Lub.	N-m	108	N-m	108
Restricting Orifice (120%)	mm	57,150	mm	57,150
Oil Capacity - Side Inlet	ml	1,189	ml	1,189
Oil Capacity - Top Inlet	ml	4,554	ml	4,554
<i>Counter Version (CTR)²</i>				
Net Weight	kg	129	kg	129
Shipping Weight	kg	142	kg	142
Carton Size	cm	132 x 78 x 76	cm	132 x 78 x 76
<i>Counter with Instrument Drive (CD)²</i>				
Net Weight	kg	130,2	kg	130,2
Shipping Weight	kg	143,8	kg	143,8
Carton Size	cm	132 x 78 x 76	cm	132 x 78 x 76

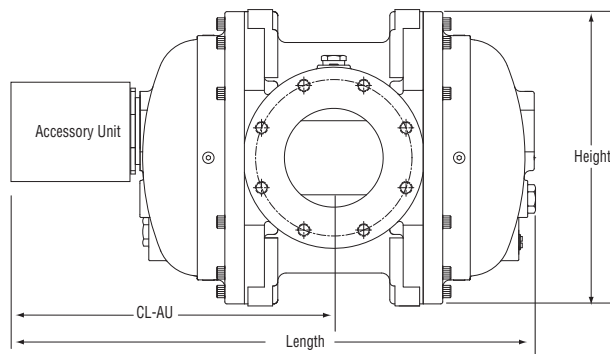
NOTES:

¹ Bolt Length varies by application.

² Weights and dimensions available for CPS upon request.



G1000 Series B3	Overall Length		Overall Height		Width (Flange/Flange)		Centerline to Accessory End (CL-AU)		Request Detailed Drawing Number
	inches	mm	inches	mm	inches	mm	inches	mm	
CTR	38-1/32	966	18	457	21	533	21-11/32	542	D054750-001
CD	42-1/2	1080	18	457	21	533	25-17/32	649	D054433-001
ICPS	39-19/32	1006	18	457	21	533	23-1/16	586	D054751-001
IMC/W2	42-13/32	1077	18	457	21	533	25-23/32	653	D057732-000



To order

Specify: Meter Series, Size and Type (i.e., ROOTS Meter Series G1000 CD).

For CD, specify Inlet (Top or Side) and ID Rotation (CW-B or CCW-A).

For Pulsar, specify Single or Dual Connectors and Connector Type (MS Circular, Conduit or Cable Gland).

For more specific ordering information on the electronic products, request: TS:SSP or TS: MC2.

Contact the factory for other available information, options, or special requests.

Roots Meters & Instruments Dresser, Inc.

16240 Port Northwest Drive
Houston, Texas 77041-2645 USA
Inside US Ph: 800.521.1114
Outside US Ph: 832.590.2303

Fax: 800.335.5224
Fax: 832.590.2494



www.dresser.com