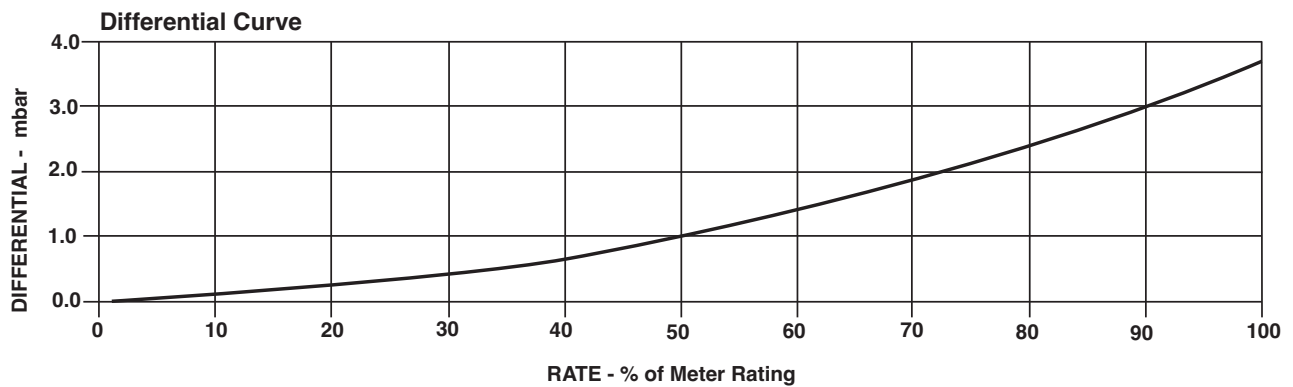
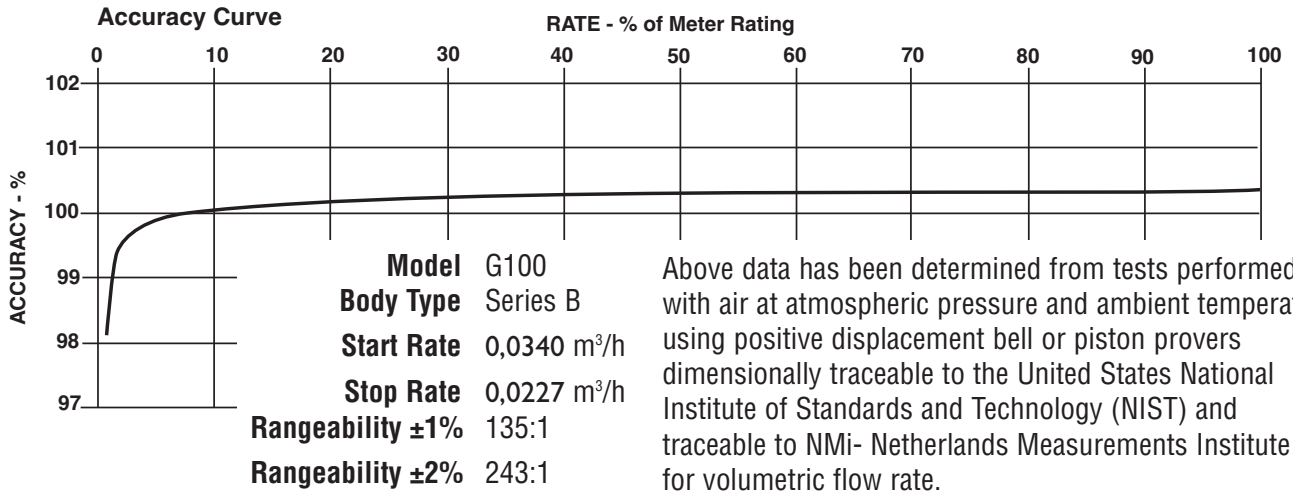




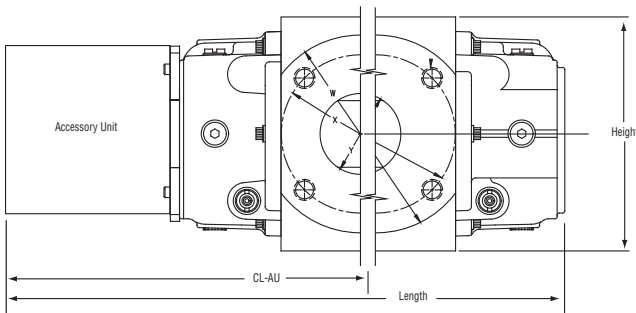
SERIES B3: G100 ROOTS® Meter

	UNITS	Metric	UNITS	Metric/ANSI
Temperature Range	deg. C	-40 to +60	deg. C	-40 to +60
Base Rating (Q Max.)	m³/h	160	m³/h	160
Max. Operating Pressure (MAOP)	bar	12	bar	12
Leak Test (125% MAOP)	bar	15	bar	15
Static Test (2 x MAOP)	bar	24	bar	24
Rangeability +/- 1%	ratio	135:1	ratio	135:1
Rangeability +/- 2%	ratio	243:1	ratio	243:1
Start Rate	m³/h	0,0340	m³/h	0,0340
Stop Rate	m³/h	0,0227	m³/h	0,0227
Flow Rate @ 1,25 mbar, Gas	m³/h	112,6	m³/h	112,6
Avg. Differential @ 100% Flow	mbar	3,7	mbar	3,7
Max. Pressurization Rate	kPa/sec	35	kPa/sec	35
Max. Operating Speed	rpm	2250	rpm	2250
Gear Ratio	ratio	953,125:1	ratio	953,125:1
Displaced Volume/Revolution	m³	0,001049	m³	0,00104
Drive Rate, CD	m³/rev	1,0	m³/rev	1,0
Min. Odometer Reading	m³	0,020	m³	0,020
Odometer Turnover	yrs.	7,13	yrs.	7,13
Nominal Pipe Size	mm	80	mm	80
Flange-to-Flange	mm	172	mm	172
Flange Connection	DIN	DN 80	ANSI	150#FF
Bolts per Flange	qty.	8	qty.	4
Bolt Size ¹	mm	M16	in.	5/8 - 11
Flange Bolt Hole Depth	mm	23,8	mm	23,8
Bolt Torque: Lubricated/Non-Lub.	N-m	74/81	N-m	74/81
Restricting Orifice (120%)	mm	18,256	mm	18,256
Oil Capacity - Side Inlet	ml	37	ml	37
Oil Capacity - Top Inlet	ml	226	ml	226
<i>Counter Version (CTR)²</i>				
Net Weight	kg	16	kg	16
Shipping Weight	kg	17	kg	17
Carton Size	cm	69 x 28 x 23	cm	69 x 28 x 23
<i>Counter with Instrument Drive (CD)²</i>				
Net Weight	kg	18	kg	18
Shipping Weight	kg	19	kg	19
Carton Size	cm	79 x 38 x 33	cm	79 x 38 x 33

NOTES:¹ Bolt Length varies by application.² Weights and dimensions available for CPS upon request.



G100 Series B3	Overall Length		Overall Height		Width (Flange/Flange)		Centerline to Accessory End (CL-AU)		Request Detailed Drawing Number
	inches	mm	inches	mm	inches	mm	inches	mm	
CTR	20	507	6-31/32	177	6-3/4	172	12-1/4	311	D054517-000
CD	23-27/32	606	6-31/32	177	6-3/4	172	16-5/32	411	D054431-000
ICPS	21-1/2	546	6-31/32	177	6-3/4	172	13-13/16	351	D056900-000
IMC/C2	23-1/2	597	6-31/32	177	6-3/4	172	15-13/16	402	D056486-000
IMC/W2	24-1/2	622	6-31/32	177	6-3/4	172	16-13/16	427	D056702-000



To order

Specify: Meter Series, Size and Type (i.e., ROOTS Meter Series B3 G100).

For CD, specify Inlet (Top or Side) and ID Rotation (CW-B or CCW-A).

For Pulser, specify Single or Dual Connectors and Connector Type (MS Circular, Conduit or Cable Gland).

For more specific ordering information on the electronic products, request: TS:SSP, TS:IMC/C2, or TS:IMC/W2.

Contact the factory for other available information, options, or special requests.

**Roots Meters & Instruments
Dresser, Inc.**

16240 Port Northwest Drive
Houston, Texas 77041-2645 USA
Inside US Ph: 800.521.1114 Fax: 800.335.5224
Outside US Ph: 832.590.2303 Fax: 832.590.2494



www.dresser.com