

Micro Modem, Telephone Line Version

Model 108



Features

- Remote or difficult to access meters will require less frequent visits as parameters can be changed remotely. These features add up to significant cost savings and offer flexibility and convenience to the operator. For example, a change in the heating value of the gas, affecting supercompressibility, can be changed from the office using the Micro Corrector User Terminal Software (MCUT).
- The Micro Modem accepts commands from the corrector to dial up a telephone number(s) in the case of a fault, or alarm.

TRANSMISSION FORMAT

V22 standard at 2400 bps, full/half duplex

EXTERNAL/INTERNAL POWER

Powered from telephone line. Backup Lithium Battery also recharged by telephone line when modem is installed and wired according to instructions

TELEPHONE CONNECTION

External plug & socket

INTRINSIC SAFETY

BASEEFA CERT No Ex98E2082 ATEX CERT No BAS99ATEX7049 II(1)G [EEx ia] IIC. The Dresser Telephone Line Modem must be installed in the safe area and is suitable for connection to Micro Correctors or Micro Loggers installed in hazardous area locations rated to Class 1, Division 1, Groups C and D

DATA INTERFACE

Sequence compatible with Micro Series Corrector Models MC2, IMCW2, IMCW2-dp, and Micro Logger, Model ML2

DATA INTERFACE CONNECTION

Via integral socket connector. The mating cable is available as an extra option.

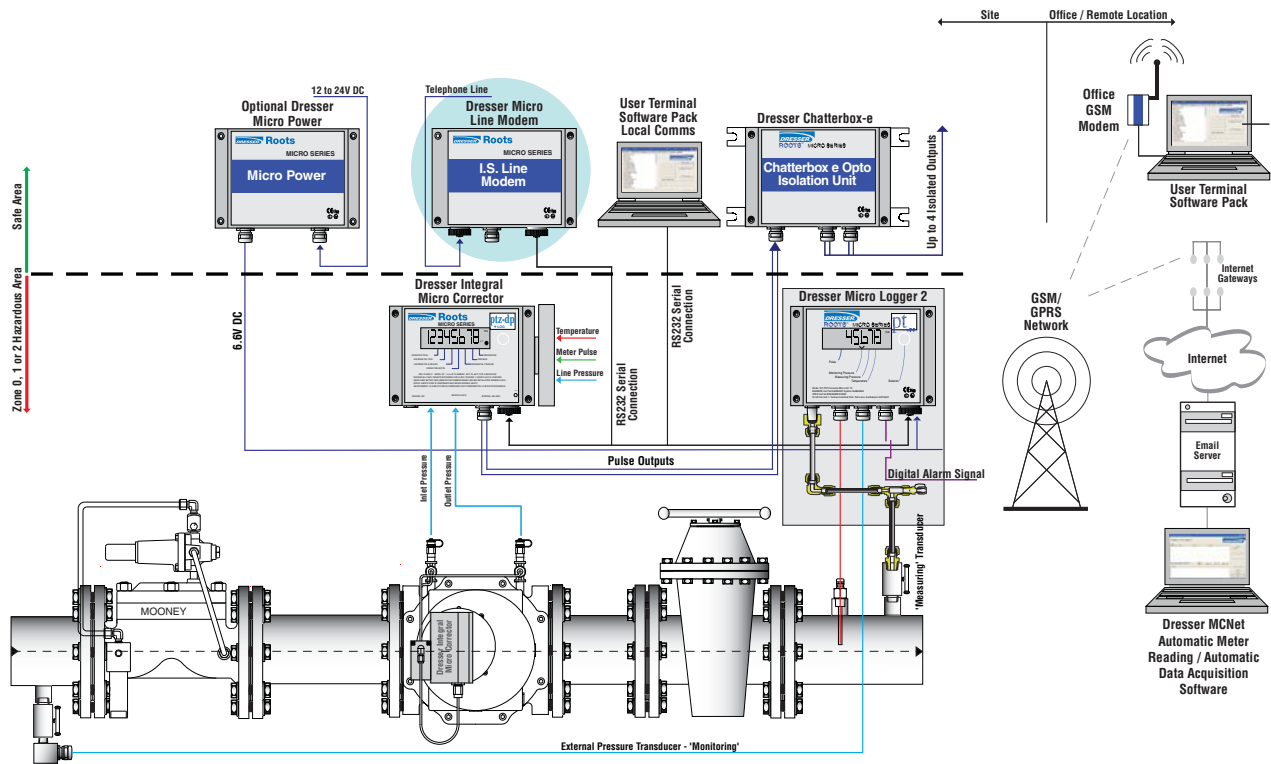
Opto-isolators provide an intrinsically safe unit specifically designed to work with the Dresser range of Micro Series products including volume correctors & data loggers.

An internal rechargeable lithium polymer battery is designed to be charged from a 7 to 24V DC supply or any suitable power source. An internal power regulator prevents any internal damage from excessive voltage.

Dresser does provide an AC/DC Adapter for charging the lithium battery. The part number to order is on the back page of this document. Consult factory for pricing.

The telephone line model of the Dresser Micro Modem takes enough required power from the telephone line to handle one data download per day.

Enclosed in an intrinsically safe NEMA 4x rated cast aluminum housing, the Telephone Line powered Micro Modem is designed to be plug and play no modem "setup" required.



MODEM SPECIFICATIONS

AUTO DIALING

Using Hayes commands

AUTO ANSWER

Sequence compatible with Micro Series Correctors (all models), Micro Logger and other products using similar protocol

CONTROL OF FUNCTIONS

By Hayes compatible command subset RS232
Connection to other Micro Series products will be via an RS-232 serial cable

ENCLOSURE

Weatherproof aluminum enclosure NEMA 4X (IP66) rated suitable for wall or panel mounting. Size: 6.3" Width x 4.7" Height x 2.4" Depth

ENVIRONMENTAL CONDITIONS

-4° to 122°F (-20° to 50°C) operating
-4° to 158°F (-20° to 70°C) storage

MOUNTING

Integral mounting holes outside of sealing ring, therefore IP rating is not affected by installation



Modem to IMC or MC Cables

6 ft	P/N 057621-001
12 ft	P/N 057621-002
25 ft	P/N 057621-003



AC/DC Adapter Assembly

P/N 059987-000

Dresser, Inc.

16240 Port Northwest Drive
Houston, Texas 77041-2645 USA
Inside US Ph: 800.521.1114 Fax: 800.335.5224
Outside US Ph: 832.590.2303 Fax: 832.590.2494

©2009 Dresser, Inc. All rights reserved.
Roots and Dresser are registered trademarks of Dresser, Inc.



www.dresser.com

TS: Micro Modem Telephone Line
11.09