

Dresser Micro Modem, Model GSM/GPRS



- GPRS Communication Class 10 with embedded TCP/IP internet application protocols
- Internal rechargeable lithium polymer battery
- Intrinsically safe via Opto-Isolation to [EEx ia], suitable for connection to equipment in Class 1, Division 1, Groups C and D hazardous environments
- 7 Internal LEDs to assist during installation or troubleshooting
- 1 External LED displays GSM network power and communication status
- Weatherproof cast aluminum housing rated to NEMA 4X
- Power saving features, ON/OFF, can be controlled from the MC2, the IMCW2 and the Micro Logger 2
- External antenna for optimum signal location

The Dresser Micro Modem, Model GSM/GPRS embeds a wireless quad band GPRS modem.

Opto-isolators provide an intrinsically safe unit specifically designed to work with the Dresser range of Micro Series products including volume correctors & data loggers.

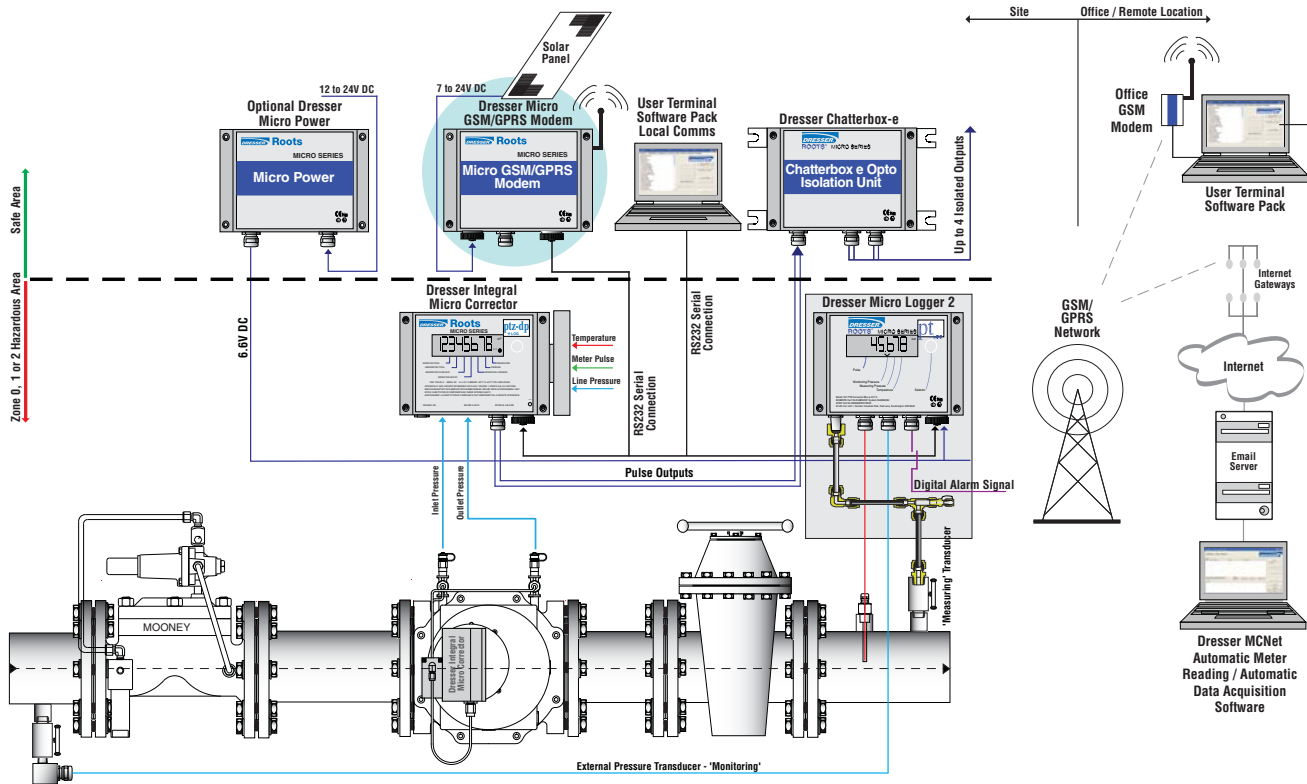
An internal rechargeable lithium polymer battery is designed to be charged from a 7 to 24V DC supply or any suitable power source. An internal power regulator prevents any internal damage from excessive voltage.

Internal diagnostic LEDs aid in installation and troubleshooting on site. An external LED displays network or communication status.

The Dresser GSM/GPRS Modem is designed to work directly with the MCNet SQL Database software, and allows for simple mechanical and electrical installation.



GSM/GPRS Modem installation complete with solar panel.



MODEM SPECIFICATION

Quad band, 850/900/1800/1900/MHz Multi-Tech GPRS embedded MMC Modem™ wireless modem. Circuit switched data (GSM) up to 14.4K bps transparent and non transparent

INTERNAL POWER

Re-chargeable lithium polymer battery

EXTERNAL POWER

7 to 24V DC from any source

INTRINSIC SAFETY

BASEEFA CERT No Ex98E2082 ATEX CERT No BAS99ATEX7049 II(1)G [EEx ia] IIC. The Dresser Micro GSM Modem must be installed in the safe area and is suitable for connection to Micro Correctors or Micro Logger 2's installed in hazardous areas locations Zone 0, 1 or 2. (Class 1, Division 1, Groups C and D)

INSTALLATION / DIAGNOSTIC LED's (INTERNAL)

'Pwr' (Correct External Power Source) 'Bat' (Internal Battery is Sufficient to operate the modem) 'ON' (GSM is in 'ready' mode awaiting communication) 'Rx' & 'Tx' (Data is being transferred)

Roots Meters & Instruments Dresser, Inc.

16240 Port Northwest Drive
Houston, Texas 77041-2645 USA
Inside US Ph: 800.521.1114
Outside US Ph: 832.590.2303

Fax: 800.335.5224
Fax: 832.590.2494

SERVICE LED (EXTERNAL)

Constantly On - Unit is powered up in 'On' mode
1 Hz Flashing - GSM Modem has established contact with the GSM network
Constantly Off - Unit is in 'sleep' mode

ANTENNA

Standard MMCX type connector with a sim socket and magnetic base

RS232

Connection to other Micro Series products will be via an RS-232 serial cable

ENCLOSURE

Weatherproof aluminum enclosure NEMA 4X (IP66) rated suitable for wall or panel mounting. Size: 6.3" Width x 4.7" Height x 2.4" Depth

SOLAR PANEL

BP Solar, 10 WATT, 0.6 Amp Panel

