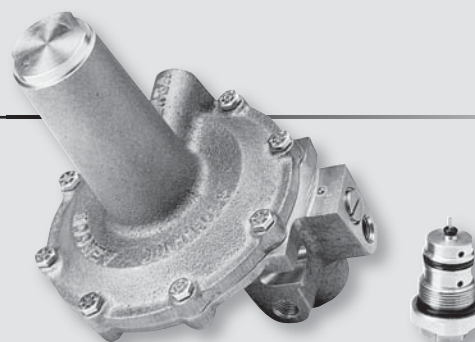


## Series 20L Pilot

The Series 20L Pilot is a pressure control regulator designed primarily for use as a control pilot for pressure reducing (PRV) and differential pressure (DPV) applications. The Series 20L Pilot is designed for both liquid and gas applications. The pilot is available in both bronze (Series 20L-B) and aluminum (Series 20L-A).



**Series 20L Flowgrid® Pilot with Body Insert (Cartridge) Removed**

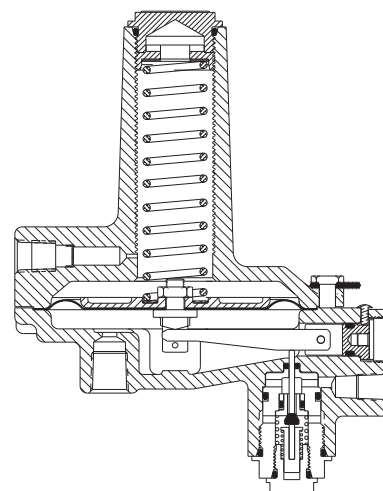
### Specifications

Body Material	Series 20L Bronze	Series 20L Aluminum
Body Style	Pressure Reducing (PRV)	Pressure Reducing (PRV)
Orifice Size	0.15 Inches (Standard) 0.17 Inches (Optional)	0.15 Inches (Standard) 0.17 Inches (Optional)
Connections	1/4" NPT Inlet, Outlet & Loading 1/2' NPT Sense	1/4" NPT Inlet, Outlet & Loading 1/2' NPT Sense
Temperature Nitrile Diaphragm & O-rings	Working -20°F to 150°F Emergency -40°F to 200°F	Working -20°F to 150°F Emergency -40°F to 200°F
Maximum Static Inlet Pressure	1500 psig	750 psig
Maximum Static Loading Pressure*	1500 psig	750 psig
Maximum Operating Inlet Pressure	750 psig	750 psig
Maximum Operating Loading Pressure	750 psig	750 psig
Outlet Pressure	750 psig	750 psig
Maximum Sensing Pressure	300 psig	150 psig
Maximum Spring Housing Pressure	300 psig	150 psig
Set Pressure Range Spring Ranges	5 Inches W.C. to 8 psig (Five Springs - Refer to Page 2 for each spring Range)	

\* Anytime the Pilot or Valve is exposed to pressures in excess of its rating it should be inspected for damage.

### Flow Coefficients and Constants

Series 20L Pilot			
	C <sub>1</sub>	MAX C <sub>g</sub>	MAX C <sub>v</sub>
0.15 Orifice (standard)	38	9.58	0.25
0.17 Orifice (optional)	38	11.18	0.29

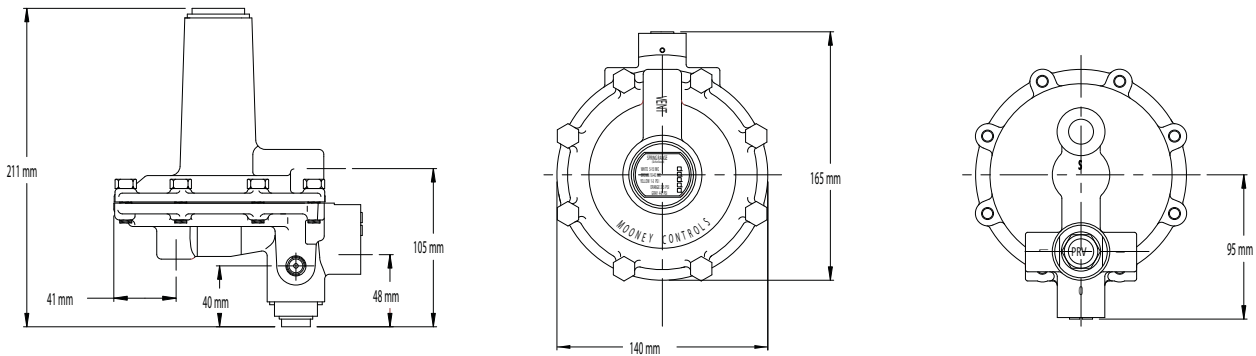


**Sectional View**

### Materials of Construction

<b>Body &amp; Spring Housing</b>	Cast Manganese Bronze or Cast A356-T6 Aluminum
<b>Body Insert &amp; Closing Cap</b>	Brass or 6061 T-6 Aluminum
<b>Orifice</b>	303 Stainless Steel or Delrin
<b>Plug &amp; Stem</b>	Nitrile/303 Stainless Steel Viton/303 Stainless Steel
<b>Lever</b>	Zinc Plated Carbon Steel
<b>Pivot</b>	Brass or Aluminum (Anodized)
<b>Vent Orifice</b>	303 Stainless Steel
<b>Diaphragm</b>	Nitrile/Nylon
<b>O-rings</b>	Nitrile or Viton

## Dimensions



## Pilot Performance

Series 20L Pilot		Pressure Reducing Mode Restrictor Set at 4		
Spring Range	Color	Lock-up (psi)	Drop (psi) @ Max. Capacity <sup>1</sup>	Boost @ Constant Flow (psi) <sup>2</sup>
5 - 15 inches W.C.	White	1.0 inches W.C.	0.5 inches W.C.	0.7 inches W.C.
10 - 40 inches W.C.	Brown	2.0 inches W.C.	2.0 inches W.C.	0.7 inches W.C.
1 - 3 psi	Yellow	0.2 psig	0.15 psig	0.025 psig
2 - 5 psi	Orange	0.35 psig	0.25 psig	0.025 psig
4 - 8 psi	Gray	0.5 psig	0.30 psig	0.025 psig

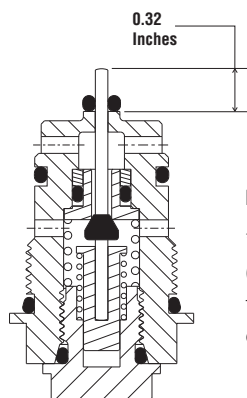
1. Constant Inlet Pressure (P<sub>i</sub>).

2. Per 100 psi decrease in inlet pressure (P<sub>i</sub>).

## Trim Options

All Series 20L Pilots		
Internal Trim	Std. Construction	Option
Orifice	303 SST (0.15 Standard Orifice)	303 SST (0.17 Orifice)
Plug/Stem	Nitrile/303 SST	Viton/303 SST
Diaphragm	Nitrile/Nylon	Nitrile/Nylon
O-ring	Nitrile	Viton

### Cartridge Sectional View



### Pressure Reducing (PRV) Mode

\* The Series 20L may not be used in the Back Pressure (BPV/Relief) Mode to control the Flowgrid® Valve because the Series 20L Pilot set point range is below the minimum differential required to open the Flowgrid® Valve.

## Stock Numbers

Series 20L Pilot (Bronze)	Spring Color	PRV Stock	Weight
5 - 15 inches W.C.	White	FP-100	9 lbs
10 - 40 inches W.C.	Brown	FP-101	9 lbs
1 - 3 psi	Yellow	FP-102	9 lbs
2 - 5 psi	Orange	FP-103	9 lbs
4 - 8 psi	Gray	FP-104	9 lbs

Series 20L Pilot (Aluminum)	Spring Color	PRV Stock	Weight
5 - 15 inches W.C.	White	FP-105	4 lbs
10 - 40 inches W.C.	Brown	FP-106	4 lbs
1 - 3 psi	Yellow	FP-107	4 lbs
2 - 5 psi	Orange	FP-108	4 lbs
4 - 8 psi	Gray	FP-109	4 lbs

## Dresser, Inc.

2822 S. 1030 W.  
Salt Lake City, Utah 84119  
Phone: 801.487.2225 Fax: 801.487.2587  
www.dresser.com/mooney



www.dresser.com/mooney