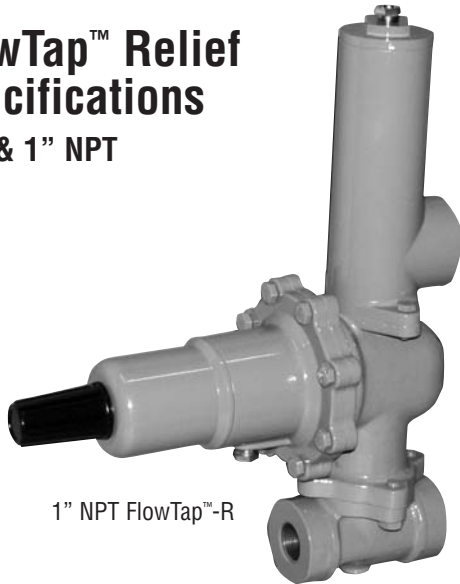


FlowTap™ Relief Specifications

3/4" & 1" NPT

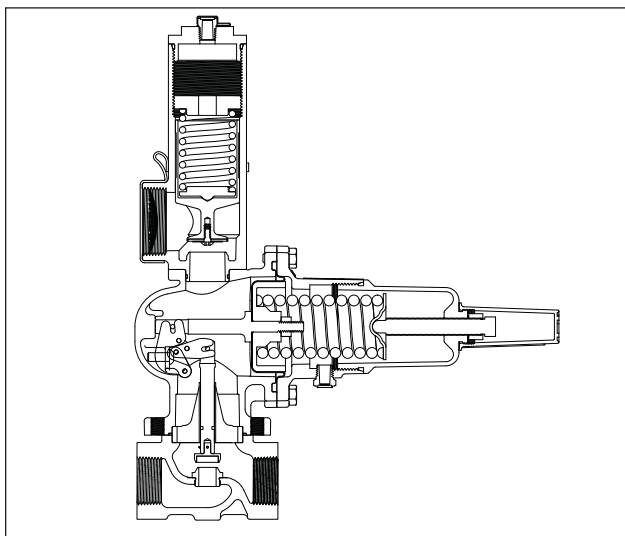


1" NPT FlowTap™-R

The FlowTap™ – Relief Regulator is an economical easy to maintain self operated pressure reducing regulator with a high capacity relief device. The relief device is designed with capacity to prevent a 60 psig MAOP (Maximum Allowable Operating Pressure) system from overpressure no matter what the inlet pressure or orifice size selected.* The Flowtap™ Regulator features a patent pending four-bar-linkage that reduces droop by approximately one-half when compared to regulators of similar design. Five spring ranges and orifice options are available for pressure control set points up to 250 psig. The spring range may be easily changed without removing the spring case, reducing stock levels and inventory costs.

*Relief must be set at or below 60 psig. Refer to pressure ratings & sizing limitations.

SECTIONAL DRAWING



SPRING RANGES

YELLOW	5-20 psig
GREEN	15-40 psig
RED	30-80 psig
ORANGE	50-125 psig
DARK BLUE	100-250 psig

RELIEF SPRING RANGES

STAINLESS	40-60 psig
WHITE	60-75 psig

SPECIFICATIONS

FlowTap™ - Relief	
Function	Pressure Reducing Valve w/Relief
Size	3/4" & 1" NPT
Orifice Size	1/8", 3/16", 1/4", 3/8", & 1/2"
End Connections	3/4"-14 NPT & 1"-11.5 NPT
Temperature	Working -20°F to 150°F Emergency -40°F to 175°F
Max Inlet Pressure*	1,000 psig
Maximum Outlet*	250 psig
Body Tap (optional)	(Inlet only) 1/4"-18 NPT

* Limited by Orifice Size and Model. Refer to back page.

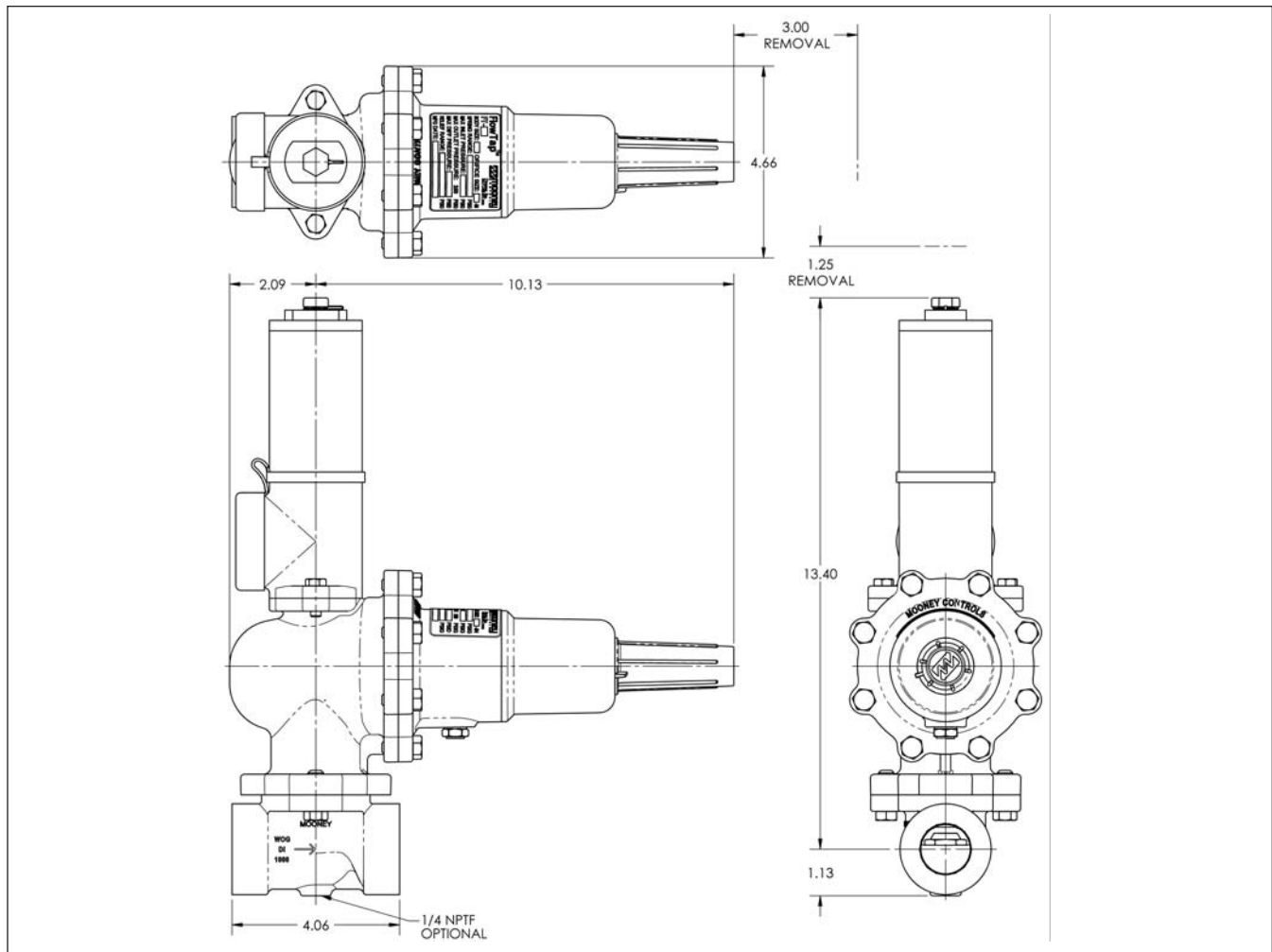
STOCK NUMBERS

Description	Stock Number	Weight
1 inch NPT	FT-1R	9.0 lbs.
3/4 inch NPT	FT-2R	9.3 lbs.

STANDARD CONSTRUCTION MATERIALS

Component	Material
Housing/Spring Case	Aluminum
Body	Ductile Iron A395
Diaphragm	Nitrile/Nylon
O-Ring & Seals	Nitrile
Bolting	ASTM A 193 GR B-7 or Equal
Main Spring	ASTM A 228/Powder Coated
Seat	300 Series SST
Relief Spring	SST

DIMENSIONS



PRESSURE RATINGS AND FLOW COEFFICIENTS

Orifice	Max Inlet (psig)	Max Outlet (Standard & Relief Models)	Max Sense/Diaphragm Casing (All Models)	Max Spring Case (All Models)	Max Diff. (All Models) (psig)	C _g	C ₁	Max Flow (scfh) @ Max Diff.	Max Available Relief C _g	Max Available Relief Capacity (scfh)
1/8"	1000	250 psig	250 psig	250 psig	1000	12	32	16000	660 C ₁ :35*	67866 @ 60 psig Relief set @ 55 psig + 5 psig build-up
3/16"	1000				1000	27	31	35400		
1/4"	900				900	47	32	55500		
3/8"	400				400	108	34	57800		
1/2"	250				250	170	38	58100		

*Estimated value.

NOTES:

- Overpressure protection is required if the pressure can exceed the inlet and/or outlet pressure ratings of the FlowTap™ Regulator.
- Anytime the FlowTap™ valve is exposed to pressures in excess of its ratings it should be inspected for damage.
- Refer to flow capacity tables and sizing recommendations for proper orifice selection.
- Expect a 5 psig build-up above relief set pressure and a 5 psig re-seat pressure below the relief set relief pressure.

Mooney Dresser, Inc.

2822 S. 1030 W.
Salt Lake City, Utah 84119
Phone: 801.487.2225 Fax: 801.487.2587
www.mooneycontrols.com



www.dresser.com