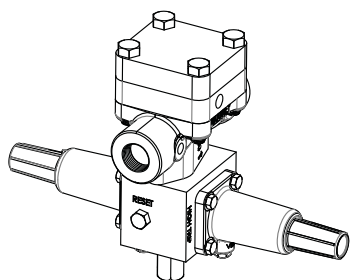
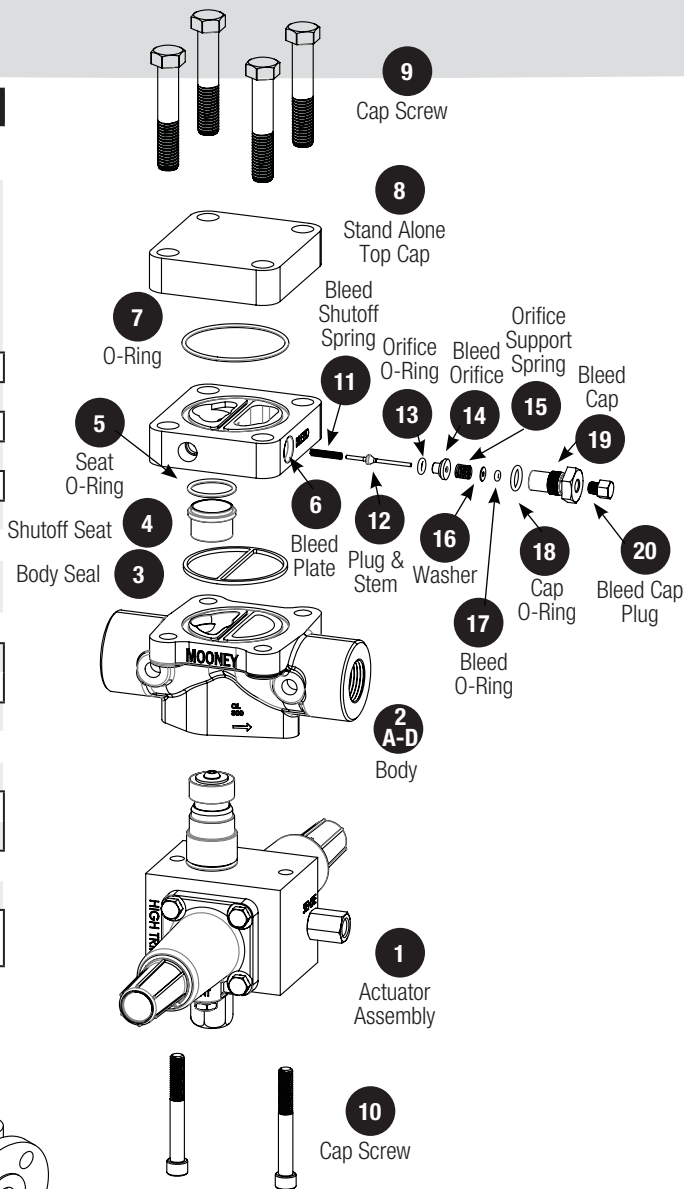


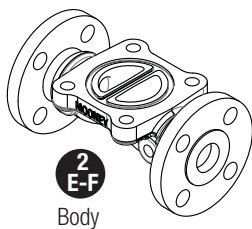
# 1" Mooney® Slam Shut Valve Assembly

## Parts List

| Item | Description  | Material          | Part Number             | Quantity |
|------|--|-------------------|-------------------------|----------|
| 1    | Actuator Assembly  |                   | See Actuator Parts List | 1        |
| 2    | Body   | Carbon Steel      |                         | 1        |
| 2A   | 1" NPT (SA-123)  |                   | 601-001-01              |          |
| 2B   | 1.-1/4" NPT (SA-124)                                     |                   | 601-040-01              |          |
| 2C   | 1" SWE (SA-125)  |                   | 601-041-01              |          |
| 2D   | 1-1/4" SWE (SA-126)                                      |                   | 601-042-01              |          |
| 2E   | CL 150 RF (SA-127)                                       |                   | 601-043-01              |          |
| 2F   | CL 300 RF (SA-128)                                       |                   | 601-044-01              |          |
| 3    | Body Seal  | Nitrile           | 101-059-01              | 1        |
| 4    | Shutoff Seat   | SST               | 601-004-01              | 1        |
| 5    | Seat O-Ring  | Nitrile           | 021-122-01              | 1        |
| 6    | Bleed Plate  | Carbon Steel      | 601-021-01              | 1        |
| 7    | O-Ring   | Nitrile           | 021-147-01              | 1        |
| 8    | Stand Alone Top Cap                                      | Carbon Steel      | 601-048-01              | 1        |
| 9    | Cap Screw (9/16-12 x3")                                  | SST               | 030-090-01              | 4        |
| 10   | Socket Head Cap Screw (3/8-16 x 3")                      | SST               | 030-089-01              | 2        |
| 11   | Bleed Shutoff Spring                                     | SST               | 040-075-01              | 1        |
| 12   | Plug & Stem  | SST/Nitrile       | 201-015-01              | 1        |
| 13   | Orifice O-Ring   | Nitrile           | 021-108-01              | 1        |
| 14   | Bleed Orifice  | SST               | 601-030-01              | 1        |
| 15   | Orifice Support Spring                                   | Steel             | 040-006-01              | 1        |
| 16   | Washer   | SST               | 034-027-01              | 1        |
| 17   | Bleed O-Ring   | Nitrile           | 021-103-01              | 1        |
| 18   | Cap O-Ring   | Nitrile           | 021-112-01              | 1        |
| 19   | Bleed Cap  | SST               | 601-022-01              | 1        |
| 20   | Bleed Cap Plug   | Zinc Plated Steel | 026-005-01              | 1        |
| 21   | 1" Slam Shut Rebuild Kit (Items 3, 5, 7, 12, 13, 17, 18) |                   | 601-049-01              |          |



Assembled View



2 E-F

Body

**Dresser, Inc.**

2822 S. 1030 W.

Salt Lake City, Utah 84119

Phone: 801.487.2225 Fax: 801.487.2587

www.dresser.com/mooney

