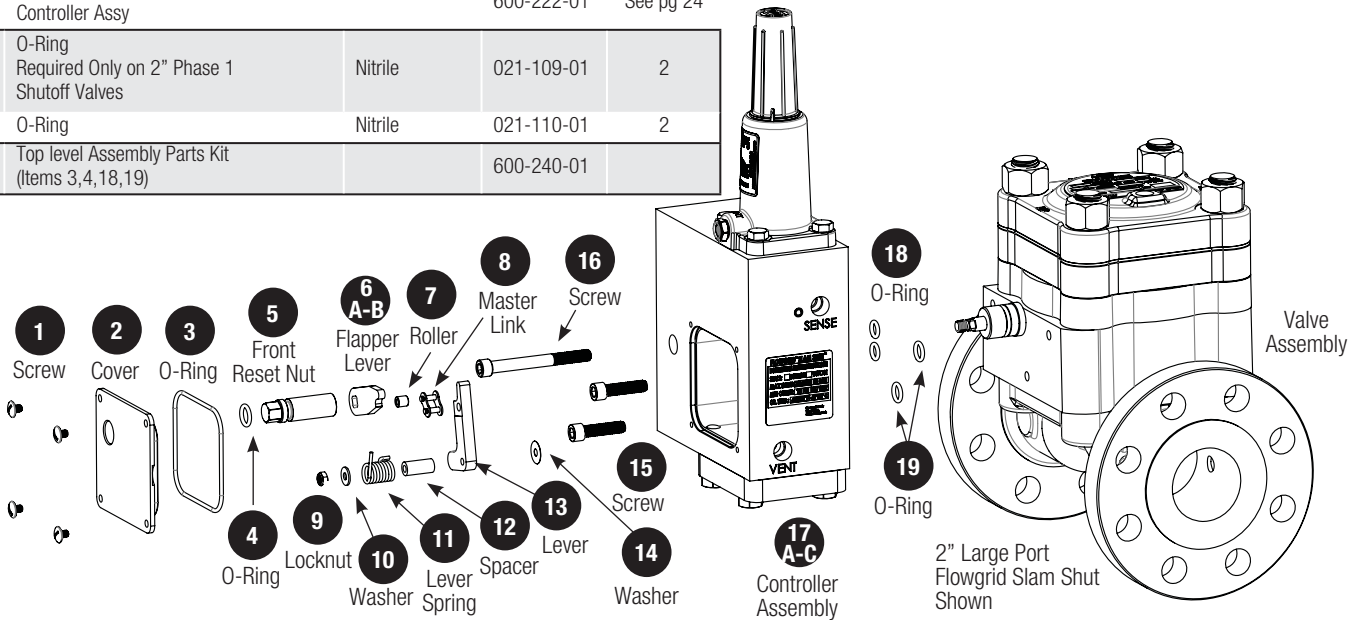


Top Level Assembly

Parts List

Item	Description	Material	Part Number	Quantity
1	Screw	Stainless Steel	030-100-01	4
2	Cover	Plastic	600-164-01	1
3	O-Ring	Nitrile	021-152-01	1
4	O-Ring	Nitrile	021-111-01	2
5	Front Reset Nut	Stainless Steel	600-168-01	1
6	Flapper Lever	Aluminum	600-079-01	1
6A	2" Valve Assembly		603-012-01	1
6B	3" & 4" Valve Assembly			
7	Roller	Stainless Steel	600-086-01	1
8	Master Link	Stainless Steel	600-083-01	1
9	Hex Locknut	Carbon Steel	032-017-01	1
10	Washer	Stainless Steel	034-023-01	1
11	Pawl Lever Spring	Stainless Steel	040-054-01	1
12	Spacer	Stainless Steel	036-006-01	1
13	Pawl Lever	Aluminum	600-080-01	1
14	Washer	Stainless Steel	034-042-01	1
15	Hex Socket Screw	Carbon Steel	030-105-01	2
16	Hex Socket Screw	Carbon Steel	030-098-01	1
17	Controller Assy			
17A	Series 50 Single Function Controller Assy		600-220-01	See pg 23
17B	Series 50D Dual Function Controller Assy		600-221-01	See pg 24
17C	Series 50DS Dual Function 2 Port Controller Assy		600-222-01	See pg 24
18	O-Ring Required Only on 2" Phase 1 Shutoff Valves	Nitrile	021-109-01	2
19	O-Ring	Nitrile	021-110-01	2
20	Top level Assembly Parts Kit (Items 3,4,18,19)		600-240-01	



Dresser, Inc.
 2822 S. 1030 W.
 Salt Lake City, Utah 84119
 Phone: 801.487.2225 Fax: 801.487.2587
www.dresser.com/mooney