

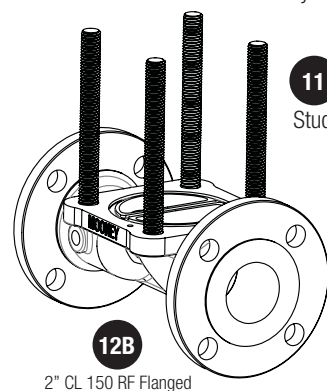
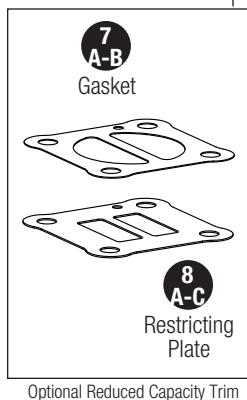
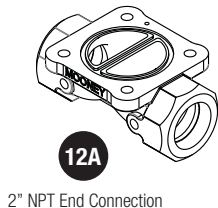
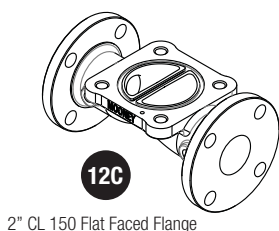
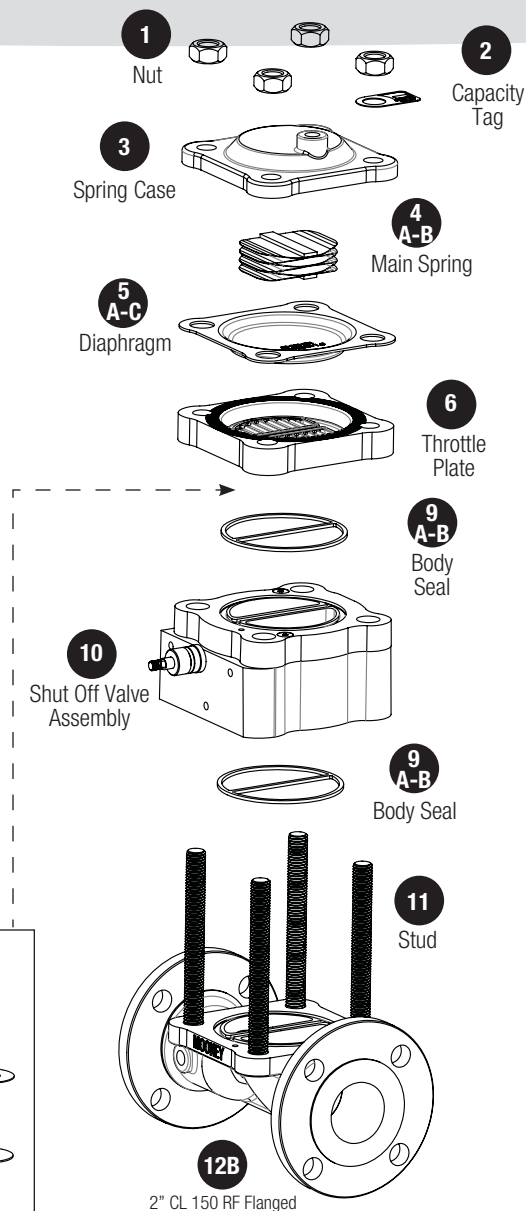
2" Flowgrid® 250 Regulator & Shutoff Valve Assembly

Parts List

Item	Description	Material	Part Number	Quantity
1	Nut	ANSI 2H	032-003-01	4
2	Capacity Tag	Brass	100-014-01	1
3	Spring Case	Aluminum	122-004-01	1
4	Main Spring			1
4A	Standard	Stainless Steel	102-014-01	
4B	Low Differential	Stainless Steel	102-034-01	
5	Diaphragm			1
5A	60 Durometer	Nitrile	102-053-02	
5B	75 Durometer	Nitrile	102-053-01	
5C	Viton®	Viton®	102-053-05	
6	Throttle Plate	Aluminum	122-003-01	1
7	Gasket **			1
7A	Nitrile	Nitrile	122-005-01	
7B	Viton	Viton	122-005-02	
8	Restricting Plate **			1
8A	35% Capacity Slotted	Carbon Steel	122-006-01	
8B	50% Capacity Slotted	Carbon Steel	122-007-01	
8C	75% Capacity Slotted	Carbon Steel	122-008-01	
9	Body Seal			2
9A	Nitrile	Nitrile	102-016-01	
9B	Viton®	Viton®	102-016-02	
10	Shutoff Valve Assembly		602-019-01	1
11	Stud	ANSI B7	031-033-01	4
12	Body-Single Port			1
12A	2" NPT End Connection D.I. (SG-82)	Ductile Iron	102-002-01	
12B	2" CL 150 RF Flanged D.I. (SG-83)	Ductile Iron	102-009-01	
12C	2" CL 150 Flat Faced Flange D.I. (SG-84)	Ductile Iron	102-010-01	
13	2" Rebuild Kit (Items 5 & 9) (XX Indicate Diaphragm Durometer, Refer to Item 5)		600-033-XX	

Boxed items indicate recommended spare parts.

** **Reduced Capacity:** An extra gasket (Item 7) and restricting plate (Item 8) are required for reduced capacity trim.



Dresser, Inc.

2822 S. 1030 W.
Salt Lake City, Utah 84119
Phone: 801.487.2225 Fax: 801.487.2587
www.dresser.com/mooney

