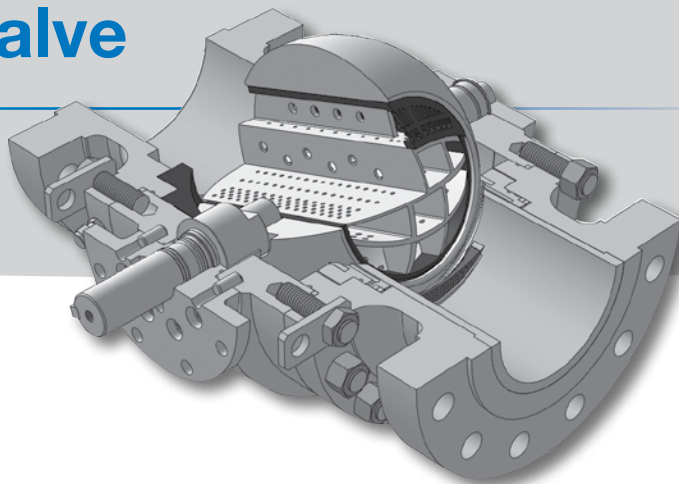


QTCV-T4 Series Quiet Trim Control Valve



Demanding Application? QTCV-T4 Keeps it Under Control

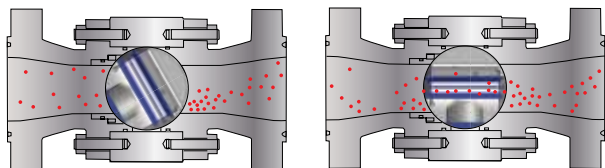
With the most aggressive design in the T-Ball® series, the QTCV-T4 Quiet Trim Control Valve is the ideal solution for natural gas applications that require uncompromising noise attenuation, high pressure differentials, large mass flow volumes and extreme precision.

The QTCV-T4 Quiet Trim Control Valve was designed with two goals in mind:

- Reduce Operating Costs
- Improve Pipeline Efficiency

It's rugged, low maintenance design plays a vital role in protecting your downstream assets and minimizing unscheduled maintenance, keeping your system up and running.

Through its patented multistage trim design, the QTCV-T4 prevents damaging vibrations by attacking noise at its source. The T-4 design combines the frictional resistance of both parallel and horizontal perforated plates. As the process fluid flows through the valve it is taken through a series of staged pressure reductions providing up to **25 dBa Noise Attenuation**.



It is not uncommon for debris to be flowing through the pipeline. Excessive particulate build-up often clogs drilled holes found in cage style valves, leading to premature failure and unscheduled maintenance. The T-Ball® series features a self-cleaning design. The rotating element sweeps debris downstream preventing any scouring, build up and clogging. This clean sweep feature reduces unplanned process downtime, maximizing your bottom line.

Typical Natural Gas Applications

- Buried Service
- Compression/Anti-Surge
- Distribution
- Erosive Service
- Multi-Phase Fluids
- Power Generation
- Production
- Sour Gas Service
- Storage Field
- Transmission

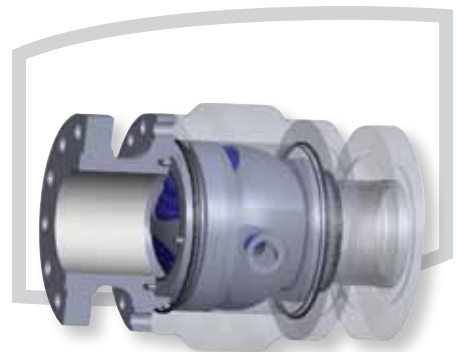
Product Properties	
Size¹	NPS 4 to NPS 20 100 mm to 500 mm
Pressure Ratings	ANSI Class 150 to 2500
End Connections	RFFE, RTJ, Weld End
Temperature Range	-60° C to 176° C -76° F to 349° F
ANSI Shut Off Rating	Soft Seat - Tested up to Class VI Meat Seat - Tested up to Class V
Material Selection	Carbon Steel, Duplex, Stainless Steel, Inconel, Tungsten Carbide
Turndown	200:1
Max. Pressure Differential	1500 psi (150 bar)
Noise Attenuation	up to 25 dBa

1. Consult engineering for larger sizes
 2. Additional options available upon request
 3. Material selection per customers requirements and gas composition

Why a T-Ball® Control Valve?

When compared to cage style control valves, a T-Ball® provides unmatched benefits which reduce operating costs and optimize your complete system's performance...

Feature	T-Ball®	Cage-Style
¼-Turn Design precise control throughout entire operating range	✓	
Low Pressure Differential Control ideal for high speed applications	✓	
Buried Service Capability provides up to an additional 37 dBa noise attenuation	✓	
Bi-Directional Flow standard can decrease a systems assets up to 50%	✓	
Greatest Capacity size for size reduces station footprint	✓	
High Turndown provides preparedness for market changes	✓	
Low Emissions rotary stem less susceptible to leakage from wear and tear	✓	
Modified Equal Percentage flow characteristic maintains control at both high and low flow rates	✓	
Multi-Stage Pressure Reduction resists hydrate formation and prevents high exit velocities	✓	
Self Cleaning design minimizes operational disturbances from clogged trim	✓	



Dresser Inc.

Americas Elk Grove Village, IL +1 847 434 5940
 Europe/Africa Skelmersdale, U.K. +44 1695 52600
 Middle East Dubai, U.A.E. + 97 14 899 1742
 Asia-Pacific Kuala Lumpur, Malaysia +60 3 2267 2600
 China Beijing +86 10 8486 5335
 Russia Moscow +7 495 585 1276



www.dresser.com/becker

QTCV-T4 Spec Sheet
5.11