

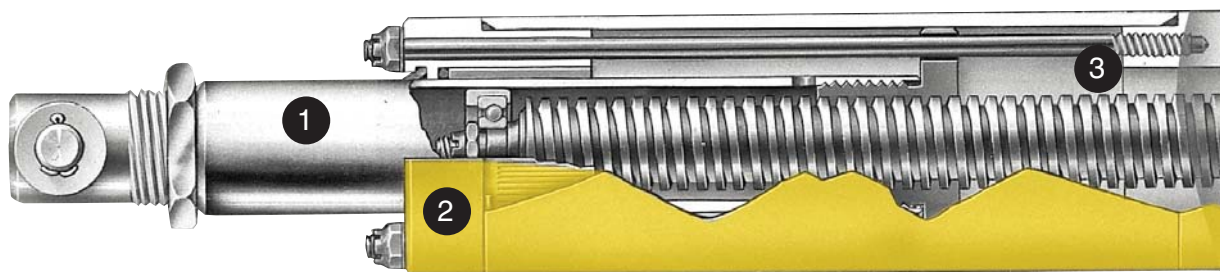
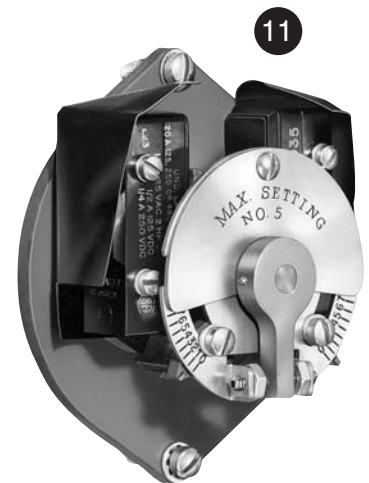
7000 SERIES LINEAR ACTUATORS

The Andco® 7000 Series linear actuators are completely self-contained, electro-mechanical devices. Designed and fabricated for dependable, long-life operation, these actuators are used for positioning, automation of material handling, or flow control equipment.

7000 Series actuators are driven by a high starting torque, low inertia motor connected to a drive screw through a set of gears. When the motor rotates the drive screw, the mating nut and attached extension rod move axially.

Upon completion of stroke, the gear driven position limit switch interrupts power to the motor. If movement of the extension rod is prevented in either direction at any point in actuator travel due to an external mechanical overload, a thrust switch will interrupt power to the motor.

1. High strength ground and plated extension rod
2. Front end cap with bearing support, rod wiper and grease seal
3. Four tie-rod construction with guided drive nut
4. Thrust limit disc springs and spring limit sleeve to prevent total spring deflection
5. Anti-friction bearings
6. High strength alloy steel cut gears
7. Gear driven potentiometer or encoder drives
8. Heavy duty motor, TENV, NEMA D design, high starting torque, low inertia motor provides high breakaway forces and good positioning characteristics. Class F insulation is standard.
9. Versatile mounting, clevis (7100 only) trunnion or face/flange



7000 SERIES LINEAR ACTUATORS

10. Adjustable position limit switch. A two position gear driven position limit switch for end-of-travel actuator shutoff and a set of contacts for light indication are included as standard. Each position is independently adjustable and can be set anywhere within the full actuator travel.

The heavy duty rotary drum, double break switch with wiping contacts feature a patented mechanism that ensures internal gear engagement after adjustment.

11. Adjustable thrust limit switches. An adjustable thrust switch for each direction of travel is provided as standard. The switch assembly will automatically shut off the actuator if the set force is exceeded. The switch protects driven equipment from damage due to excessive forces and can also be used as a mechanism for positive seating.

OTHER FEATURES

1. Weatherproof or dust-ignition proof construction
2. Plated external hardware
3. Permanently lubricated
4. Non-backdriving acme screws
5. Efficient ball screws with motor brakes
6. Electrical components are prewired and terminated inside the actuator



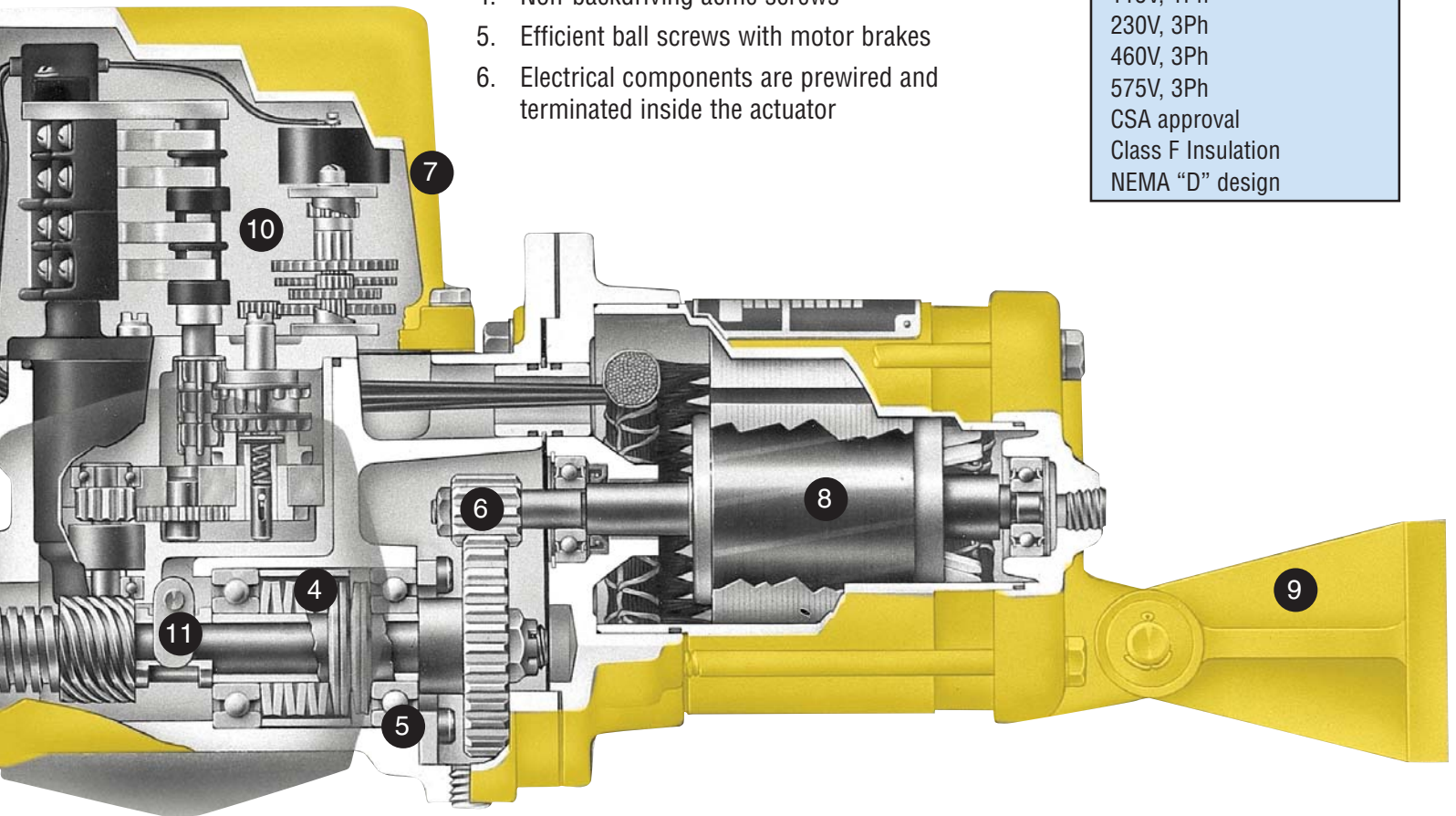
Temperature Range

Ambient: -30°F to +120°F



Motor Data

115V, 1Ph
230V, 3Ph
460V, 3Ph
575V, 3Ph
CSA approval
Class F Insulation
NEMA "D" design



7000 SERIES LINEAR ACTUATORS



7000 SERIES ACME SCREW LINEAR ACTUATORS

| Model | Velocity (in./sec.) | Breakway Thrust Rating (lbs.) | Running Thrust Rating (lbs.) | | | Stroke Range (ins.) | Approx. Weight Range (lbs.) |
|-----------------|---------------------|-------------------------------|------------------------------|----------|----------|---------------------|-----------------------------|
| | | | 5% Duty | 10% Duty | 25% Duty | | |
| 7102S (1-Phase) | 0.8 | 975 | 450 | 330 | 130 | 6-24 | 50-80 |
| | 1.1 | 750 | 325 | 240 | 95 | | |
| | 2.0 | 410 | 175 | 135 | 50 | | |
| | 2.8 | 290 | 125 | 90 | 35 | | |
| 7105T | 1.1 | 2,100 | 650 | 240 | 95 | 6-24 | 45-80 |
| | 2.0 | 1,225 | 350 | 135 | 50 | | |
| | 2.8 | 875 | 250 | 90 | 35 | | |
| 7202S (1-Phase) | 1.1 | 750 | 330 | 330 | 260 | 6-36 | 55-100 |
| | 1.5 | 460 | 240 | 240 | 180 | | |
| | 2.8 | 300 | 130 | 130 | 100 | | |
| | 4.0 | 215 | 90 | 90 | 70 | | |
| 7205T | 1.5 | 1,700 | 480 | 460 | – | 6-36 | 50-100 |
| | 2.8 | 900 | 260 | 255 | – | | |
| | 4.0 | 650 | 185 | 180 | – | | |
| 7210T | 1.5 | 2,100 | 1,000 | – | – | 6-36 | 50-100 |
| | 2.8 | 1,815 | 510 | – | – | | |
| | 4.0 | 1,300 | 370 | – | – | | |
| 7310T | 1.4 | 2,530 | 1,100 | 1,050 | 525 | 6-60 | 85-185 |
| | 2.1 | 1,750 | 700 | 700 | 350 | | |
| | 3.2 | 1,130 | 455 | 455 | 225 | | |
| 7317T | 2.1 | 4,220 | 1,300 | 1,300 | – | 6-60 | 100-200 |
| | 3.2 | 2,750 | 850 | 520 | – | | |
| 7324T | 2.0 | 5,900 | 1,750 | – | – | 6-60 | 100-200 |
| | 3.2 | 3,800 | 1,250 | – | – | | |
| 74-7330T | 2.8 | 5,200 | 2,850 | – | – | 6-60 | 120-240 |
| | 3.6 | 4,000 | 2,200 | – | – | | |

7000 SERIES ACME SCREW LINEAR ACTUATORS WITH GEARBOX ASSEMBLY

| Model | Velocity (in./sec.) | Breakway Thrust Rating (lbs.) | Running Thrust Rating (lbs.) | | | Stroke Range (ins.) | Approx. Weight Range (lbs.) |
|-----------------|---------------------|-------------------------------|------------------------------|----------|----------|---------------------|-----------------------------|
| | | | 5% Duty | 10% Duty | 25% Duty | | |
| 7202S (1-Phase) | 0.2 | 2,100 | 1,100 | 1,100 | 1,100 | 6-36 | 65-110 |
| 7205T | 0.5 | 2,100 | 1,100 | 1,100 | 1,100 | 6-36 | 65-110 |
| 7302S (1-Phase) | 0.2 | 4,560 | 1,845 | 1,845 | 1,845 | 6-60 | 95-190 |
| | 0.4 | 2,130 | 920 | 920 | 920 | | |
| | 0.7 | 1,130 | 490 | 490 | 490 | | |
| 7305T | 0.4 | 6,200 | 1,795 | 1,795 | 1,795 | 6-48 | 90-160 |
| 7324T | 1.1 | 7,000 | 3,075 | – | – | 6-48 | 115-205 |
| 74-7330T | 1.5 | 7,000 | 5,100 | – | – | 6-60 | 130-250 |

7000 SERIES LINEAR ACTUATORS

7300 SERIES BALL SCREW LINEAR ACTUATORS

| Model | Velocity (in./sec.) | Breakaway Thrust Rating (lbs.) | Running Thrust Rating (lbs.) | | | | Stroke Range (ins.) | Approx. Weight Range (lbs.) |
|--------------------|------------------------|---|------------------------------|-------------|-------------|-------------|---------------------------|-----------------------------------|
| | | | 5% Duty | 20% Duty | 40% Duty | 60% Duty | | |
| 7302S (1-Phase) | 1.4 | 1,990 | 670 | 670 | 670 | 670 | 6-48 | 110-190 |
| | 2.1 | 1,370 | 460 | 460 | 460 | 460 | | |
| | 3.2 | 890 | 300 | 300 | 300 | 300 | | |
| | 4.2 | 690 | 230 | 230 | 230 | 230 | | |
| | 6.4 | 450 | 150 | 150 | 150 | 150 | | |
| | 12.2 | 240 | 80 | 80 | 80 | 80 | | |
| 7310T | 1.4 | 7,000 | 2,680 | 2,680 | 2,680 | 2,680 | 6-48 | 110-190 |
| | 2.1 | 5,780 | 1,850 | 1,850 | 1,850 | 1,850 | | |
| | 4.2 | 2,900 | 920 | 920 | 920 | 920 | | |
| | 6.4 | 1,875 | 600 | 600 | 600 | 600 | | |
| | 12.2 | 940 | 320 | 320 | 320 | 320 | | |
| 7317T | 2.1 | 7,000 | 3,230 | 2,700 | 2,150 | 1,800 | 6-48 | 110-210 |
| | 4.2 | 7,000 | 1,610 | 1,610 | 1,610 | 1,610 | | |
| | 6.4 | 4,550 | 1,050 | 1,050 | 1,050 | 1,050 | | |
| | 12.2 | 2,400 | 550 | 550 | 550 | 550 | | |
| 7324T | 4.2 | 7,000 | 3,400 | 2,300 | - | - | 6-48 | 120-260 |
| | 6.4 | 6,600 | 2,200 | 1,500 | - | - | | |
| | 12.2 | 3,400 | 1,150 | 790 | - | - | | |

7400 SERIES BALL SCREW LINEAR ACTUATORS

| Model | Velocity (in./sec.) | Breakaway Thrust Rating (lbs.) | Running Thrust Rating (lbs.) | | | Stroke Range (ins.) | Approx. Weight Range (lbs.) |
|-------|------------------------|---|------------------------------|-------------|-------------|---------------------------|-----------------------------------|
| | | | 5% Duty | 10% Duty | 25% Duty | | |
| 7430T | 4.2 | 12,000 | 5,100 | 4,900 | 4,700 | 12-60 | 135-350 |
| 7450T | 5.5 | 16,000 | 7,000 | 6,100 | 4,900 | 12-60 | 125-375 |

7500 SERIES BALL SCREW LINEAR ACTUATORS

| Model | Velocity (in./sec.) | Breakaway Thrust Rating (lbs.) | Running Thrust Rating (lbs.) | | | Stroke Range (ins.) | Approx. Weight Range (lbs.) |
|-------|------------------------|---|------------------------------|-------------|-------------|---------------------------|-----------------------------------|
| | | | 5% Duty | 10% Duty | 25% Duty | | |
| 7530T | 2.0 | 24,000 | 12,000 | 11,000 | 10,000 | 12-60 | 275-575 |
| 7550T | 2.0 | 42,000 | 20,000 | 16,000 | 12,500 | 12-60 | 275-625 |

NOTES

1. The suffix S in the model number indicates a 115 VAC, single phase motor. 220 VAC, single phase is optional.
2. The suffix T in the model number indicates a 230 or 460 VAC, 60 cycle three phase. 380 VAC, 50 cycle and 575 VAC, 60 cycle are optional
3. Strokes are available in 6 inch increments up to 36 inches and 12 inch increments up to 60 inches.
4. All stroke lengths can be adjusted downward with the position limit switch.
5. Actuators with greater force and nonstandard strokes and velocities quoted upon request.
6. The information contained herein is in effect at the time of printing and the company reserves the right to make changes.

7000 SERIES LINEAR ACTUATORS



7000 SERIES ACME SCREW LINEAR ACTUATORS

| Model | 6" Stroke | | 12" Stroke | | 18" Stroke | | 24" Stroke | | 30" Stroke | | 36" Stroke | | 48" Stroke | | 60" Stroke | |
|----------|-----------|-------|------------|-------|------------|-------|------------|-------|------------|-------|------------|-------|------------|-------|------------|-------|
| | A | B | A | B | A | B | A | B | A | B | A | B | A | B | A | B |
| 7102S | 26.32 | 18.14 | 32.32 | 24.14 | 38.32 | 30.14 | 44.32 | 36.14 | - | - | - | - | - | - | - | - |
| 7105T | 25.32 | 18.14 | 31.32 | 24.14 | 37.32 | 30.14 | 43.32 | 36.14 | - | - | - | - | - | - | - | - |
| 7202S | 26.17 | 18.58 | 32.17 | 24.58 | 38.17 | 30.58 | 44.17 | 36.58 | 50.17 | 42.58 | 56.17 | 48.58 | - | - | - | - |
| 7205T | 25.17 | 18.58 | 31.17 | 24.58 | 37.17 | 30.58 | 43.17 | 36.58 | 49.17 | 42.58 | 55.17 | 48.58 | - | - | - | - |
| 7210T | 26.17 | 18.58 | 32.17 | 24.58 | 38.17 | 30.58 | 44.17 | 36.58 | 50.17 | 42.58 | 56.17 | 48.58 | - | - | - | - |
| 7310T | 32.45 | 24.88 | 38.45 | 30.88 | 44.45 | 36.88 | 50.45 | 42.88 | 56.45 | 48.88 | 62.45 | 54.88 | 74.45 | 66.88 | 86.45 | 78.88 |
| 7317T | 32.88 | 24.88 | 38.88 | 30.88 | 44.88 | 36.88 | 50.88 | 42.88 | 56.88 | 48.88 | 62.88 | 54.88 | 74.88 | 66.88 | 86.88 | 78.88 |
| 7324T | 33.82 | 24.88 | 39.82 | 30.88 | 45.82 | 36.88 | 51.82 | 42.88 | 57.82 | 48.88 | 63.82 | 54.88 | 75.82 | 66.88 | 87.82 | 78.88 |
| 74-7330T | 39.30 | 29.36 | 45.30 | 35.36 | 51.30 | 41.36 | 57.30 | 47.36 | 63.30 | 53.36 | 69.30 | 59.36 | 81.30 | 71.36 | 93.30 | 83.36 |

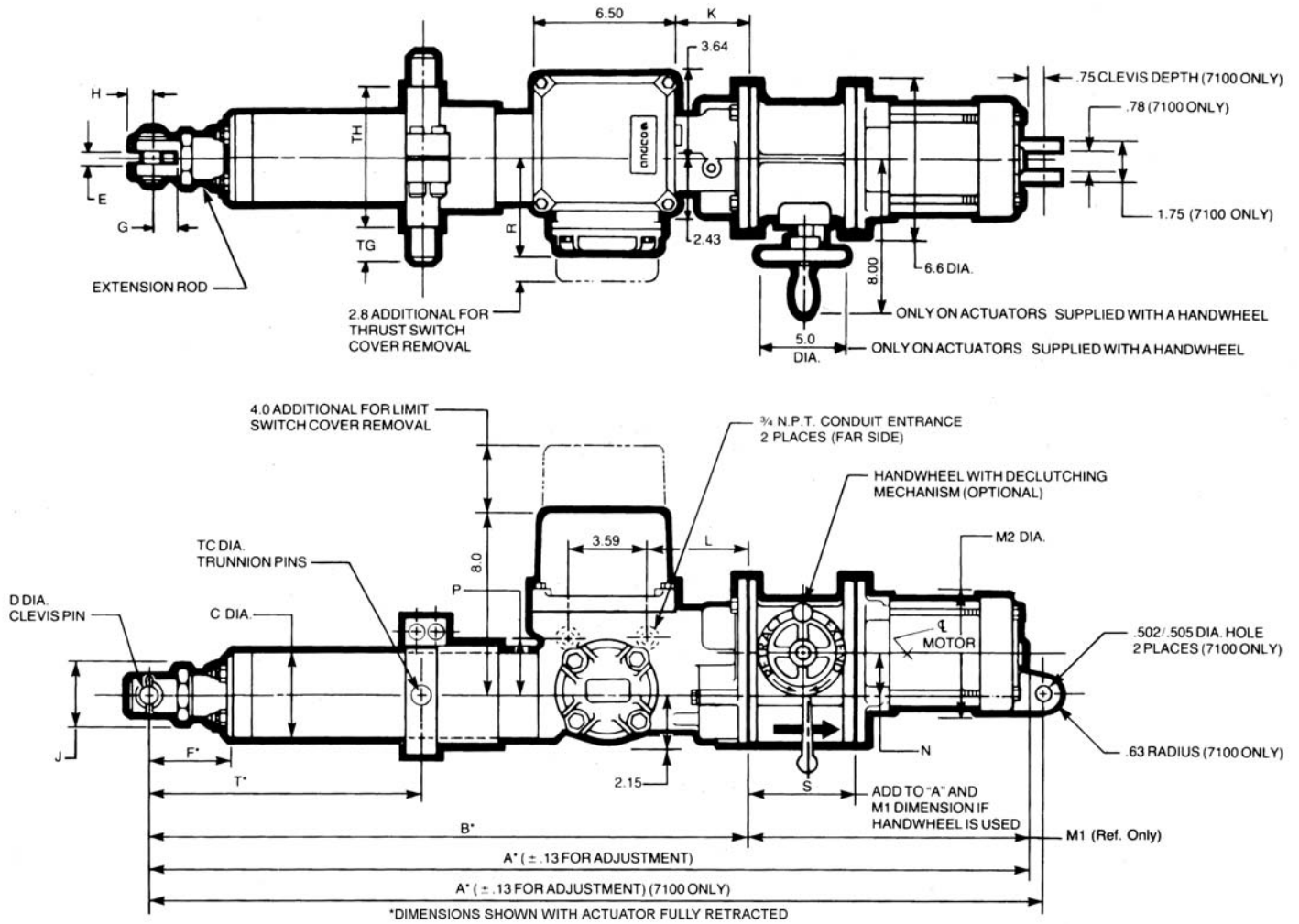
| Model | C | D | E | F | G | H | J | K | L | M1 | M2 | N | P | R | S |
|----------|------|------|------|------|------|------|------|------|------|------|------|------|------|------|------|
| 7102S | 2.50 | .375 | .38 | 2.53 | 1.00 | .38 | 1.63 | 0.94 | 2.32 | 8.18 | 6.00 | 1.60 | 2.65 | 3.60 | 4.68 |
| 7105T | | | | | | | | | | 7.18 | | | | | |
| 7202S | 2.75 | .500 | .50 | 2.40 | 1.00 | .50 | 1.63 | 0.94 | 2.32 | 7.59 | 6.00 | 1.60 | 2.65 | 3.60 | 4.68 |
| 7205T | | | | | | | | | | 6.59 | | | | | |
| 7210T | | | | | | | | | | 7.59 | | | | | |
| 7310T | 3.88 | .750 | .63 | 4.32 | 1.13 | .75 | 2.25 | 3.29 | 4.72 | 7.57 | 6.00 | 2.00 | 2.82 | 4.19 | 5.18 |
| 7317T | | | | | | | | | | 8.00 | | | | | |
| 7324T | | | | | | | | | | 8.94 | | | | | |
| 74-7330T | 4.38 | 1.25 | 1.26 | 6.13 | 2.00 | 1.25 | 3.25 | 3.29 | 4.72 | 9.94 | 6.86 | 2.00 | 2.82 | 4.19 | 5.18 |

7000 SERIES ACME SCREW LINEAR ACTUATORS WITH GEARBOX ASSEMBLY

| Model | 6" Stroke | | 12" Stroke | | 18" Stroke | | 24" Stroke | | 30" Stroke | | 36" Stroke | | 48" Stroke | | 60" Stroke | |
|----------|-----------|-------|------------|-------|------------|-------|------------|-------|------------|-------|------------|-------|------------|-------|------------|-------|
| | A | B | A | B | A | B | A | B | A | B | A | B | A | B | A | B |
| 7102S | 30.88 | 18.58 | 36.88 | 24.58 | 42.88 | 30.58 | 48.88 | 36.58 | 54.88 | 42.58 | 60.88 | 48.58 | - | - | - | - |
| 7205T | 29.88 | 18.58 | 35.88 | 24.58 | 41.88 | 30.58 | 47.88 | 36.58 | 53.88 | 42.58 | 59.88 | 48.58 | - | - | - | - |
| 7302S | 37.63 | 24.88 | 43.63 | 30.88 | 49.63 | 36.88 | 55.63 | 42.88 | 61.63 | 48.88 | 67.63 | 54.88 | 79.63 | 66.88 | 91.63 | 78.88 |
| 7305T | 36.63 | 24.88 | 42.63 | 30.88 | 48.63 | 36.88 | 54.63 | 42.88 | 60.63 | 48.88 | 66.63 | 54.88 | 78.63 | 66.88 | 90.63 | 78.88 |
| 74-7330T | 53.20 | 29.36 | 59.20 | 35.36 | 65.20 | 41.36 | 71.20 | 47.36 | 77.20 | 53.36 | 83.20 | 59.36 | 95.20 | 71.36 | 107.20 | 83.36 |

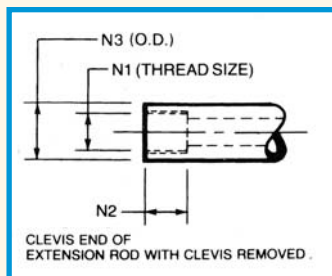
7000 SERIES LINEAR ACTUATORS

7000 SERIES ACME SCREW LINEAR ACTUATORS



| Series | N1 | N2 | N3 |
|---------|-------------|------|-------|
| 7100 | 1"-20UN | 1.00 | 1.187 |
| 7200 | 1-1/4"-20UN | 1.12 | 1.433 |
| 7300 | 1-5/8"-16UN | 1.18 | 1.860 |
| 74-7300 | 1-1/8"-16UN | 2.06 | 2.350 |

| Model | C | D | E | F | G | H | J | K | L | M1 | M2 | N | P | R | S |
|----------|------|------|------|------|------|------|------|------|------|-------|------|------|------|------|------|
| 7102S | 2.75 | .50 | .50 | 2.50 | 1.00 | .50 | 1.63 | .94 | 2.32 | 12.30 | 6.00 | 1.60 | 2.65 | 3.60 | 4.68 |
| 7205T | | | | | | | | | | 11.30 | | | | | |
| 7302S | 3.88 | .75 | .63 | 4.32 | 1.13 | .75 | 2.25 | 3.29 | 4.72 | 12.75 | 6.00 | 2.00 | 2.82 | 4.19 | 5.18 |
| 7305T | | | | | | | | | | 11.75 | | | | | |
| 74-7330T | 4.38 | 1.25 | 1.26 | 6.13 | 2.00 | 1.25 | 3.25 | 3.29 | 4.72 | | | 2.00 | 2.82 | 4.19 | 5.50 |



NOTES

For trunnion, clevis, and face flange mount dimensions see pages 14 and 15. Dimensions are for reference only. Contact Andco for certified drawings.

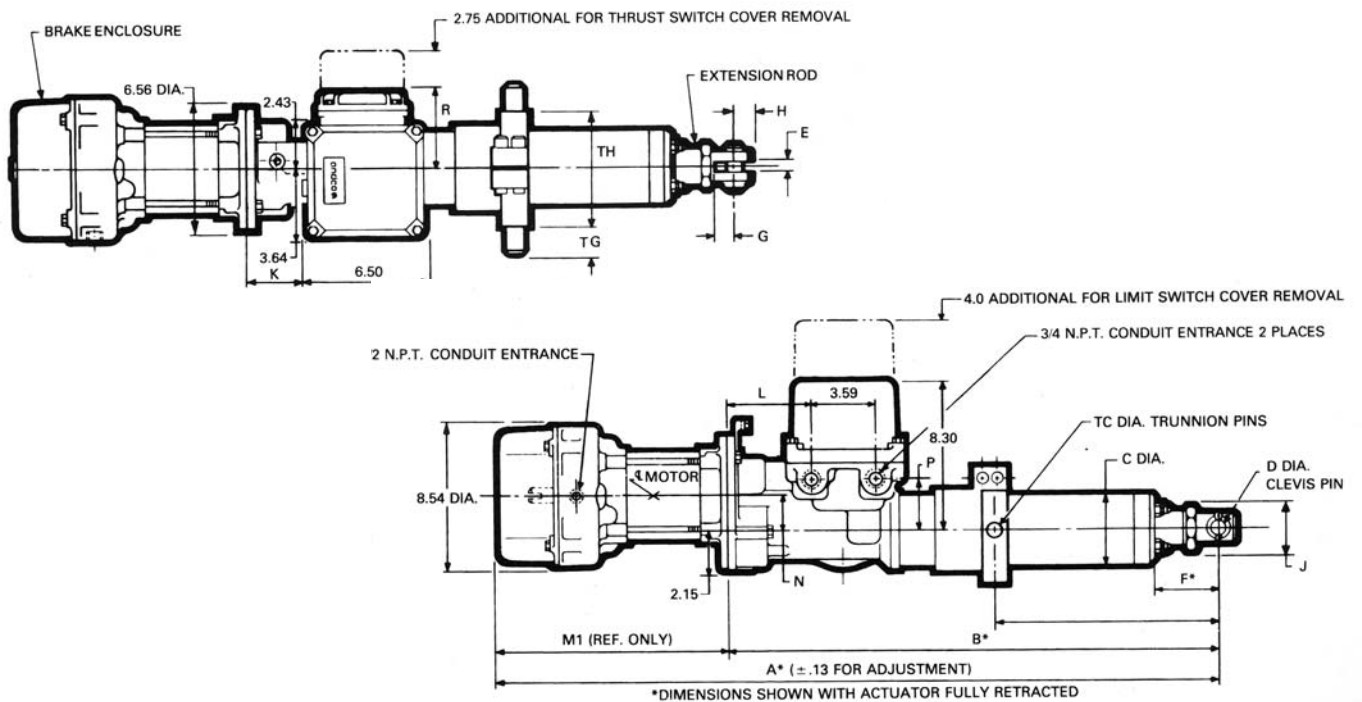
7000 SERIES LINEAR ACTUATORS



7000 SERIES BALL SCREW LINEAR ACTUATORS

| Model | 6" Stroke | | 12" Stroke | | 18" Stroke | | 24" Stroke | | 30" Stroke | | 36" Stroke | | 48" Stroke | | 60" Stroke | |
|-------|-----------|-------|------------|-------|------------|-------|------------|-------|------------|-------|------------|-------|------------|-------|------------|-------|
| | A | B | A | B | A | B | A | B | A | B | A | B | A | B | A | B |
| 7302S | 40.50 | 27.70 | 46.50 | 33.70 | 52.50 | 39.70 | 58.50 | 45.70 | 64.50 | 51.70 | 70.50 | 57.70 | 82.50 | 69.70 | - | - |
| 7310T | 40.50 | 27.70 | 46.50 | 33.70 | 52.50 | 39.70 | 58.50 | 45.70 | 64.50 | 51.70 | 70.50 | 57.70 | 82.50 | 69.70 | - | - |
| 7317T | 40.83 | 27.70 | 46.83 | 33.70 | 52.83 | 39.70 | 58.83 | 45.70 | 64.83 | 51.70 | 70.83 | 57.70 | 82.83 | 69.70 | - | - |
| 7324T | 41.70 | 27.70 | 47.70 | 33.70 | 53.70 | 39.70 | 59.70 | 45.70 | 65.70 | 51.70 | 71.70 | 57.70 | 83.70 | 69.70 | - | - |
| 7430T | - | - | 65.10 | 50.10 | 71.10 | 56.10 | 77.10 | 62.10 | - | - | 89.10 | 74.10 | 101.10 | 86.10 | 113.10 | 98.10 |
| 7450T | - | - | 68.50 | 50.10 | 74.50 | 56.10 | 80.50 | 62.10 | - | - | 92.50 | 74.10 | 104.50 | 86.10 | 116.50 | 98.10 |
| 7530T | - | - | 82.40 | 58.60 | 88.40 | 64.60 | 94.40 | 70.60 | - | - | 106.40 | 74.10 | 118.40 | 86.10 | 130.40 | 98.10 |
| 7550T | - | - | 82.40 | 58.60 | 87.80 | 64.60 | 93.80 | 70.60 | - | - | 105.80 | 74.10 | 117.80 | 86.10 | 129.80 | 98.10 |

| Model | C | D | E | F | G | H | J | K | L | M1 | N | P | R | TC | TG | TH |
|-------|------|-------|------|------|------|------|------|------|------|-------|------|------|------|-------|------|-------|
| 7302S | 3.88 | 0.750 | 0.63 | 4.00 | 1.13 | 0.75 | 2.25 | 3.29 | 4.72 | 12.80 | 2.00 | 2.82 | 4.19 | 0.875 | 1.19 | 6.50 |
| 7310T | | | | | | | | | | 12.80 | | | | | | |
| 7317T | | | | | | | | | | 13.13 | | | | | | |
| 7324T | | | | | | | | | | 14.00 | | | | | | |
| 7430T | 4.38 | 1.250 | 1.26 | 6.13 | 2.00 | 1.25 | 3.25 | 3.29 | 4.72 | 15.00 | 2.00 | 2.82 | 4.19 | 1.000 | 1.50 | 7.50 |
| 7450T | | | | | | | | | | 18.40 | | | | | | |
| 7530T | 6.50 | 1.500 | 1.54 | 5.75 | 2.38 | 1.75 | 4.56 | 3.29 | 4.72 | 23.80 | 2.00 | 2.82 | 4.19 | 1.750 | 2.50 | 10.00 |
| 7550T | | | | | | | | | | 23.20 | | | | | | |



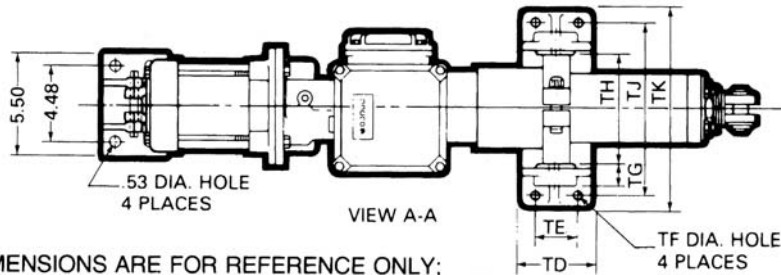
| Series | N1 | N2 | N3 |
|--------|-------------|------|------|
| 7200 | 1-1/4"-20UN | 1.12 | 1.43 |
| 7300 | 1-5/8"-16UN | 1.18 | 1.86 |
| 7400 | 2-1/8"-16UN | 2.06 | 2.35 |
| 7500 | 2-1/2"-16UN | 2.75 | 3.00 |

NOTES

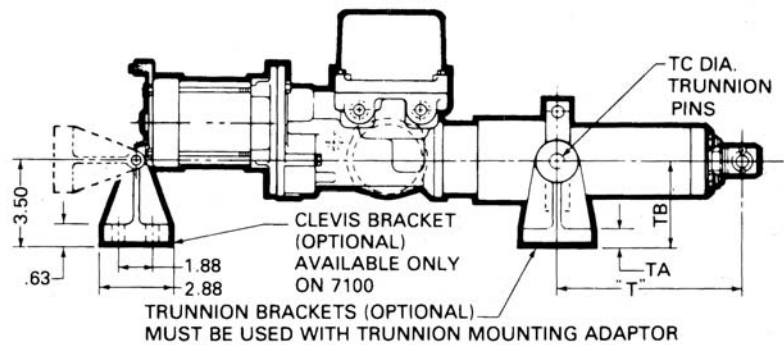
For trunnion, clevis, and face flange mount dimensions see pages 14 and 15. Dimensions are for reference only. Contact Andco for certified drawings.

7000 SERIES LINEAR ACTUATORS

TRUNNION AND CLEVIS MOUNTING



DIMENSIONS ARE FOR REFERENCE ONLY;
CONTACT ANDCO FOR CERTIFIED DRAWINGS



TRUNNION MOUNTING

| Series | TA | TB | TC | TD | TE | TF | TG | TH | TJ | TK |
|-----------|------|------|------|------|------|------|------|-------|-------|-------|
| 7100-A | 0.63 | 3.50 | 0.50 | 4.00 | 1.88 | 0.53 | 0.75 | 4.75 | 7.47 | 9.25 |
| 7200-A | 0.63 | 3.50 | 0.50 | 4.00 | 1.88 | 0.53 | 0.75 | 4.75 | 7.47 | 9.25 |
| 7300-A | 0.75 | 4.66 | 0.87 | 7.56 | 5.50 | 0.66 | 1.19 | 6.50 | 9.50 | 11.25 |
| 74-7300-A | 0.75 | 4.66 | 1.00 | 7.56 | 5.50 | 0.66 | 1.43 | 7.50 | 10.50 | 12.25 |
| 7300-B | 0.75 | 4.66 | 0.87 | 7.56 | 5.50 | 0.66 | 1.19 | 6.50 | 9.50 | 11.25 |
| 7400-B | 0.75 | 4.66 | 1.00 | 7.56 | 5.50 | 0.66 | 1.50 | 7.50 | 10.50 | 12.25 |
| 7500-B | 1.50 | 6.00 | 1.75 | 8.50 | 6.00 | 1.06 | 2.50 | 10.00 | 14.50 | 17.00 |

"T" (SHOWN WITH ACTUATOR FULLY RETRACTED)

| Series | 6" Stroke | | 12" Stroke | | 18" Stroke | | 24" Stroke | | 30" Stroke | | 36" Stroke | | 48" Stroke | | 60" Stroke | |
|-----------|-----------|-------|------------|-------|------------|-------|------------|-------|------------|-------|------------|-------|------------|-------|------------|-------|
| | MIN | MAX | MIN | MAX | MIN | MAX | MIN | MAX | MIN | MAX | MIN | MAX | MIN | MAX | MIN | MAX |
| 7100-A | 6.63 | 7.63 | 11.63 | 13.63 | 16.63 | 19.63 | 19.63 | 25.63 | - | - | - | - | - | - | - | - |
| 7200-A | 6.63 | 7.63 | 11.63 | 13.63 | 16.63 | 19.63 | 19.63 | 25.63 | 25.63 | 31.63 | 31.63 | 37.63 | - | - | - | - |
| 7300-A | 10.00 | 11.50 | 13.50 | 17.50 | 17.00 | 23.50 | 21.00 | 29.50 | 26.00 | 35.50 | 32.00 | 42.50 | 38.00 | 53.50 | 44.00 | 65.50 |
| 74-7300-A | 12.00 | 14.25 | 17.00 | 20.25 | 20.00 | 26.25 | 23.00 | 32.25 | 26.00 | 38.25 | 32.00 | 44.25 | 38.00 | 56.25 | 44.00 | 68.25 |
| 7300-B | 13.00 | 14.00 | 18.00 | 20.00 | 21.00 | 26.00 | 24.00 | 32.00 | 28.00 | 38.00 | 32.00 | 44.00 | 40.00 | 56.00 | - | - |
| 7400-B | - | - | 33.62 | 39.62 | 39.62 | 45.62 | 45.62 | 51.62 | - | - | 57.62 | 63.62 | 69.62 | 75.62 | 81.62 | 87.62 |
| 7500-B | - | - | 36.44 | 42.44 | 42.44 | 48.44 | 48.44 | 54.44 | - | - | 60.44 | 66.44 | 72.44 | 78.44 | 84.44 | 90.44 |

NOTES

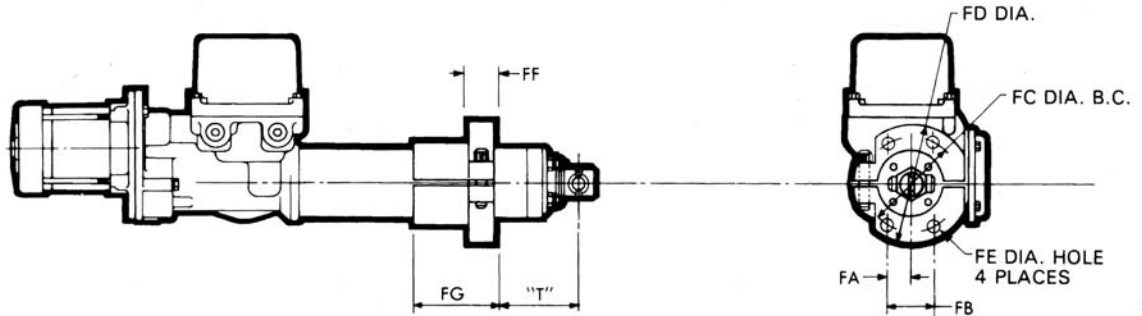
1. An adjustable trunnion mount is standard on 7200, 7300, and 74-7300 Series actuators (optional on 7100 and 7400 Series).
For 7400 Series ball screw actuators with an adjustable trunnion mount use "T" dimension from the 7400 flange mount table.
Fixed location trunnion pins are standard on 7400 and 7500 Series actuators.
2. Trunnion brackets are optional on all models.
3. Actuators supplied with adjustable trunnion mounting are set at the maximum dimension unless otherwise specified.

7000 SERIES LINEAR ACTUATORS



FACE/FLANGE MOUNTING

DIMENSIONS ARE FOR REFERENCE ONLY; CONTACT ANDCO FOR CERTIFIED DRAWINGS



FACE/FLANGE MOUNTING

| Series | FA | FB | FC | FD | FE | FF | FG |
|-----------|------|------|------|------|------|------|------|
| 7100-A | 1.00 | 2.00 | 4.25 | 5.50 | 0.56 | 1.00 | 4.00 |
| 7200-A | 1.00 | 2.00 | 4.25 | 5.50 | 0.56 | 1.00 | 4.00 |
| 7300-A | 1.50 | 3.00 | 5.75 | 7.00 | 0.69 | 1.38 | 4.00 |
| 74-7300-A | 2.25 | 4.50 | 6.50 | 8.00 | 0.81 | 1.00 | 5.00 |
| 7300-B | 1.50 | 3.00 | 5.75 | 7.00 | 0.69 | 1.38 | 4.00 |
| 7400-B | 2.30 | 4.60 | 6.50 | 8.00 | 0.81 | 1.00 | 5.00 |

"T" (SHOWN WITH ACTUATOR FULLY RETRACTED)

| Series | 6" Stroke | | 12" Stroke | | 18" Stroke | | 24" Stroke | | 30" Stroke | | 36" Stroke | | 48" Stroke | | 60" Stroke | |
|-----------|-----------|-------|------------|-------|------------|-------|------------|-------|------------|-------|------------|-------|------------|-------|------------|-------|
| | MIN | MAX | MIN | MAX | MIN | MAX | MIN | MAX | MIN | MAX | MIN | MAX | MIN | MAX | MIN | MAX |
| 7100-A | 3.32 | 6.75 | 3.32 | 12.75 | 6.63 | 18.75 | 12.63 | 24.75 | - | - | - | - | - | - | - | - |
| 7200-A | 3.32 | 6.75 | 3.32 | 12.75 | 6.63 | 18.75 | 12.63 | 24.75 | 18.63 | 30.75 | 24.63 | 36.75 | - | - | - | - |
| 7300-A | 10.00 | 11.00 | 16.00 | 17.00 | 22.00 | 23.00 | 28.00 | 29.00 | 34.00 | 35.00 | 40.00 | 41.00 | 52.00 | 53.00 | 64.00 | 65.00 |
| 74-7300-A | 11.00 | 13.25 | 17.00 | 19.25 | 23.00 | 25.25 | 29.00 | 31.25 | 35.00 | 37.25 | 41.00 | 43.25 | 53.00 | 55.25 | 65.00 | 67.25 |
| 7300-B | 12.00 | 13.50 | 18.00 | 19.50 | 24.00 | 25.58 | 30.00 | 31.50 | 36.00 | 37.58 | 42.00 | 43.50 | 54.00 | 55.50 | - | - |
| 7400-B | - | - | 20.00 | 24.00 | 25.00 | 30.00 | 30.00 | 36.00 | - | - | 38.00 | 43.00 | 40.00 | 46.00 | 43.00 | 50.00 |

NOTES

1. Face/flange actuator may be rotated 90° from arrangement shown.
2. Face/flange location is set at maximum dimension unless otherwise specified.

Industrial Products Group Dresser, Inc.

16240 Port Northwest Dr.
Houston, TX 77041-2645
Ph: 832.590.2306
Toll Free Phone: 800.945.9898

Fax: 713.849.2879
Email: andco@dresser.com



www.dresser.com