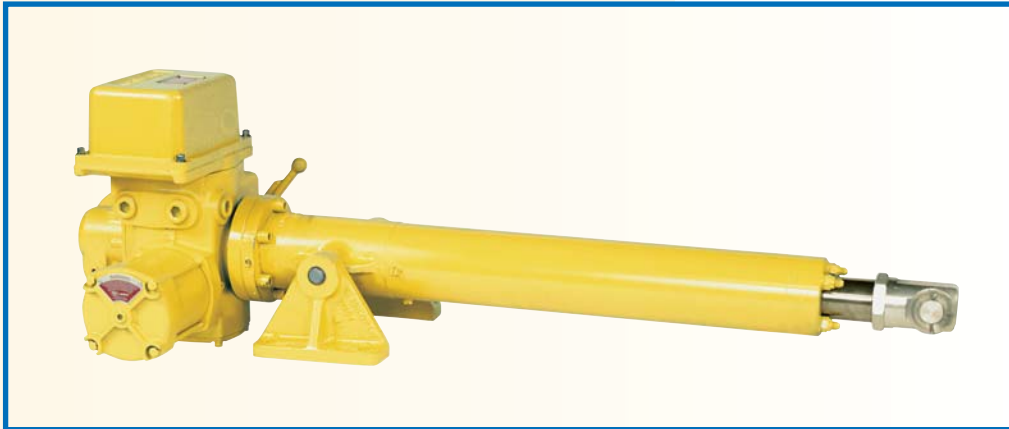


## 8000 SERIES LINEAR ACTUATORS

### ELECTRIC LINEAR ACTUATORS



The Andco® Series 8000 Linear Actuator is a completely self-contained electro-mechanical device, designed and fabricated for dependable long life operation.

The Series 8000 is driven by a high-starting torque motor connected to a drive screw through gearing. When the motor rotates the drive screw, the mating drive nut and attached extension rod move axially. The gear-driven position limit switch interrupts power to the motor upon completion of stroke. If during actuator travel some external obstacle prevents the extension rod from moving, the thrust limit switch will interrupt power to the motor.

The 8400 and 8500 Series Actuators contain an additional spring assembly to protect the actuator drive components from shock loads. When compressed, the inherent spring load will provide automatic compensation for wear, temperature change, or material compression.

**Industrial Products Group  
Dresser, Inc.**

16240 Port Northwest Dr.  
Houston, TX 77041-2645

Ph: 832.590.2306

Toll Free Phone: 800.945.9898

Fax: 713.849.2879

Email: [andco@dresser.com](mailto:andco@dresser.com)



[www.dresser.com](http://www.dresser.com)

Series 8000  
8.08

# 8000 SERIES LINEAR ACTUATORS

## SERIES 8200 ACME SCREW LINEAR ACTUATORS

Velocity in/sec	Actuator Thrust Rating (lbs.)				Stroke Range (ins.)	Approx. Weight Range (lbs.)
	Model 8202S		Model 8205T			
	Running	Breakaway	Running	Breakaway		
0.06	2000	4000	–	–	0 - 36	60 - 120
0.12	1800	2500	–	–		
0.18	1200	1700	2000	4000		
0.36	700	1100	1800	3275		

## SERIES 8300 ACME SCREW LINEAR ACTUATORS

Velocity in/sec	Actuator Thrust Rating (lbs.)						Stroke Range (ins.)	Approx. Weight Range (lbs.)
	Model 8302S		Model 8305T		Model 8310T			
	Running	Breakaway	Running	Breakaway	Running	Breakaway		
0.23	975	1375	2450	4100	3000	7000	0 - 60	90 - 200
0.50	–	–	1425	3000	2625	5700		
0.80	–	–	900	1750	1650	3300		

## SERIES 8400 ACME SCREW LINEAR ACTUATORS

Velocity in/sec	Actuator Thrust Rating (lbs.)				Stroke Range (ins.)	Approx. Weight Range (lbs.)
	Model 8417T		Model 8424T			
	Running	Breakaway	Running	Breakaway		
0.3	5075	10,275	10,000	13,500	0 - 60	120 - 250
0.6	3000	6,600	5,900	9,300		

## SERIES 8300 BALL SCREW LINEAR ACTUATORS\*

Velocity in/sec	Actuator Thrust Rating (lbs.)						Stroke Range (ins.)	Approx. Weight Range (lbs.)
	Model 8302S		Model 8305T		Model 8310T			
	Running	Breakaway	Running	Breakaway	Running	Breakaway		
0.9	650	1125	1600	3400	2900	6400	0 - 48	110 - 200
1.6	–	–	1000	2000	1875	3750		

## SERIES 8400 BALL SCREW LINEAR ACTUATORS\*

Velocity in/sec	Actuator Thrust Rating (lbs.)						Stroke Range (ins.)	Approx. Weight Range (lbs.)
	Model 8410T		Model 8417T		Model 8424T			
	Running	Breakaway	Running	Breakaway	Running	Breakaway		
0.23	11,000	16,000	–	–	–	–	0 - 60	125 - 275
0.5	5,500	12,000	9,200	16,000	–	–		
1.0	–	–	5,400	13,300	10,700	16,000		

\* Actuator has motor brake as standard.

# 8000 SERIES LINEAR ACTUATORS



## SERIES 8500 BALL SCREW LINEAR ACTUATORS

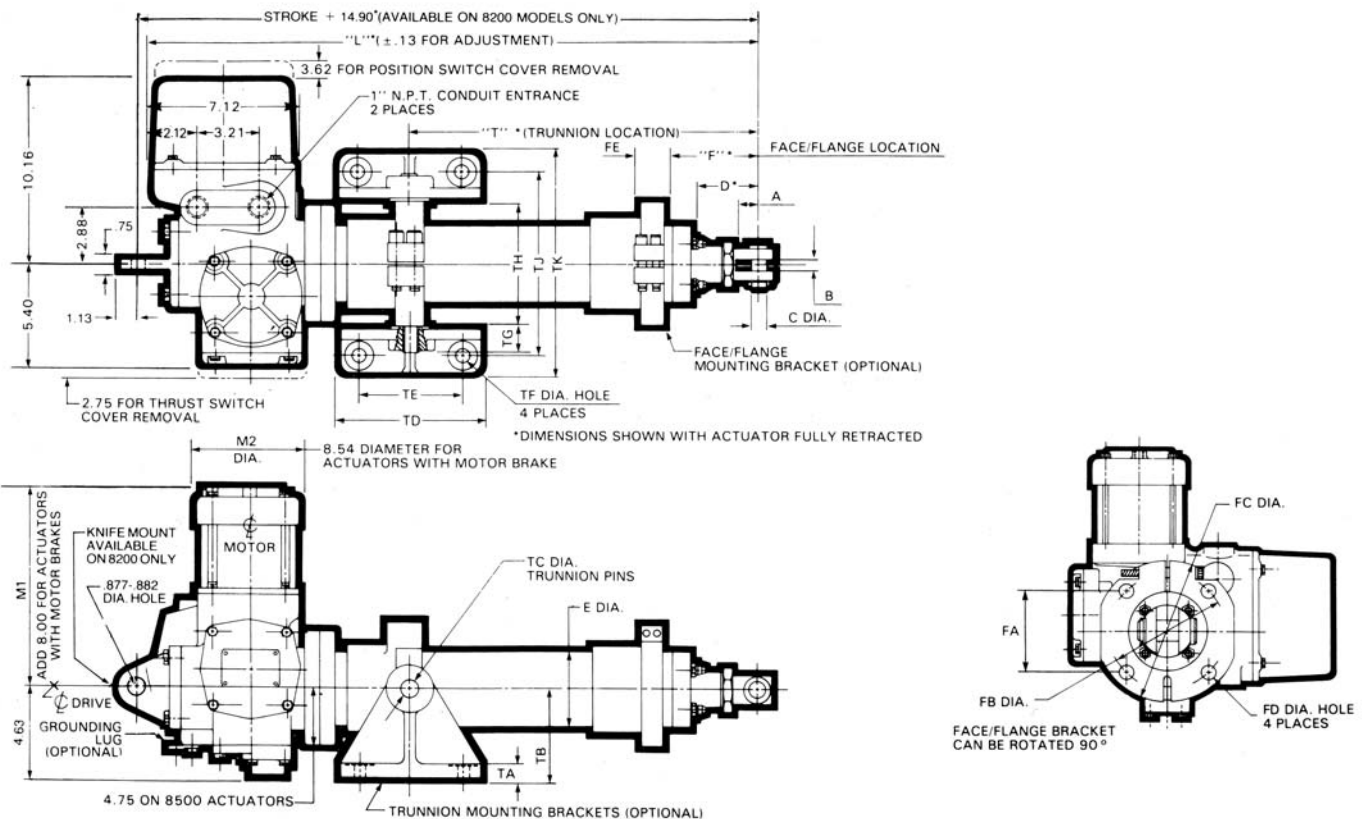
Velocity in/sec	Actuator Thrust Rating (lbs.)				Stroke Range (ins.)	Approx. Weight Range (lbs.)
	Model 8517T		Model 8524T			
	Running	Breakaway	Running	Breakaway		
0.50	9,200	20,600	18,300	27,000	0 - 60	225 - 575
1.0*	-	-	10,700	18,600		
1.9*	-	-	5,350	9,300		

## SERIES 8500 BALL SCREW LINEAR ACTUATORS WITH GEARBOX

Velocity in/sec	Actuator Thrust Rating (lbs.)						Stroke Range (ins.)	Approx. Weight Range (lbs.)
	Model 8510T		Model 8517T		Model 8524T			
	Running	Breakaway	Running	Breakaway	Running	Breakaway		
0.09	25,100	51,000	41,000	80,000	-	-	0 - 60	275 - 625
0.15	-	-	24,500	51,000	50,000	70,000		
0.3	-	-	12,300	25,800	25,000	35,000		

\* Actuator has motor brake as standard.

## STANDARD MODELS 8200, 8300, 8400 AND 8500 LINEAR ACTUATORS



### NOTES

1. Models 8202S and 8302S are 115 VAC, single phase. All other models are 230/460 VAC, 60HZ, 3 phase.
2. All units are furnished with two adjustable thrust limit switches and a two position, one contact per position gear-driven position limit switch as standard equipment.
3. Strokes are available in 6 inch increments up to 36 inches and 12 inch increments up to 60 inches.
4. Running forces are based on 5% duty cycle.
5. Do not use actuators above their rated duty cycles without consulting factory.

**SERIES 8000 POSI TORK ACTUATORS**

MODEL	DRIVE TYPE	A	B	C	D	E	M1	M2	FA	FB	FC	FD	FE	TA	TB	TC	TD	TE	TF	TG	TH	TJ	TK	STROKE	"L"		"P"		"T"	
																									MIN.	MAX.	MIN.	MAX.	MIN.	MAX.
8202S							11.06																	6	20.1	5.50	6.50	5.50	6.50	
8202T	ACME SCREW	1.00	0.50	.500	2.50	2.75	8.50	6.00	2.00	4.25	5.50	0.56	1.00	0.75	4.66	0.50	7.56	5.50	0.66	0.75	4.75	7.75	9.50	12	10.50	10.50	12.50	10.50	12.50	
10.06							18																		15.50	18.50				
10.06							24																		18.00	22.00				
							30																		44.1	20.00				
8205T							10.06																36	50.1	22.00	28.00	22.00	28.00		
8302S	ACME SCREW	1.13	0.63	.750	4.32	3.88	11.06	6.00	3.00	5.75	7.00	0.69	1.38	0.75	4.66	.875	7.56	5.50	0.66	1.19	6.50	9.50	11.25	12	14.50	14.50	16.50	14.50	16.50	
10.06							18																		19.00	22.00				
10.06							24																		21.00	25.00				
11.06							30																		48.2	23.00				
8310T							11.06																48	66.2	29.00	37.00	29.00	37.00		
8302S	BALL SCREW	1.13	0.63	.750	4.00	3.88	11.06	6.00	3.00	5.75	7.00	0.69	1.38	0.75	4.66	.875	7.56	5.50	0.66	1.19	6.50	9.50	11.25	12	12.00	13.00	13.00	12.00	13.00	
10.06							18																		17.00	19.00				
10.06							24																		22.00	25.00				
11.06							30																		51.0	27.00				
8310T							11.06																48	69.0	29.00	35.00	29.00	35.00		
8417T	ACME SCREW	2.00	1.26	1.250	6.13	4.38	12.58	6.86	4.60	6.50	8.00	0.81	1.00	0.75	4.66	1.000	7.56	5.50	0.66	1.43	7.50	10.50	12.25	12	17.00	19.00	22.12	17.00	22.12	
13.52							18																		42.1	28.12				
							24																		54.1	24.00				
							30																		60.1	26.00				
8424T							13.52																36	66.1	28.00	34.00	28.00	34.00		
8410T	BALL SCREW	2.00	1.26	1.250	6.13	4.38	11.06	6.86	4.60	6.50	8.00	0.81	1.00	0.75	4.66	1.000	7.56	5.50	0.66	1.43	7.50	10.50	12.25	12	15.00	16.00	16.00	15.00	16.00	
12.58							18																		25.00	28.00				
12.58							24																		59.6	28.00				
13.52							30																		65.6	30.00				
8424T							13.52																48	83.6	36.00	44.00	36.00	44.00		
8517T	BALL SCREW	2.38	1.54	1.500	5.75	6.50	12.58	6.86	—	—	—	—	—	1.50	6.00	1.750	8.50	6.00	1.06	2.50	10.00	14.50	17.00	12	30.44	30.44	30.44	30.44	30.44	
13.52							18																		62.5	42.44				
							24																		68.5	48.44				
							30																		74.5	54.44				
8524T							13.52																36	80.5	—	—	—	—		
8510T	BALL SCREW with GEAR BOX	2.38	1.54	1.500	5.75	6.50	11.06	6.86	—	—	—	—	—	1.50	6.00	1.750	8.50	6.00	1.06	2.50	10.00	14.50	17.00	12	30.44	30.44	30.44	30.44	30.44	
12.58							18																		68.5	42.44				
12.58							24																		74.5	48.44				
13.52							30																		80.5	54.44				
8524T							13.52																48	98.5	—	—	—	—		