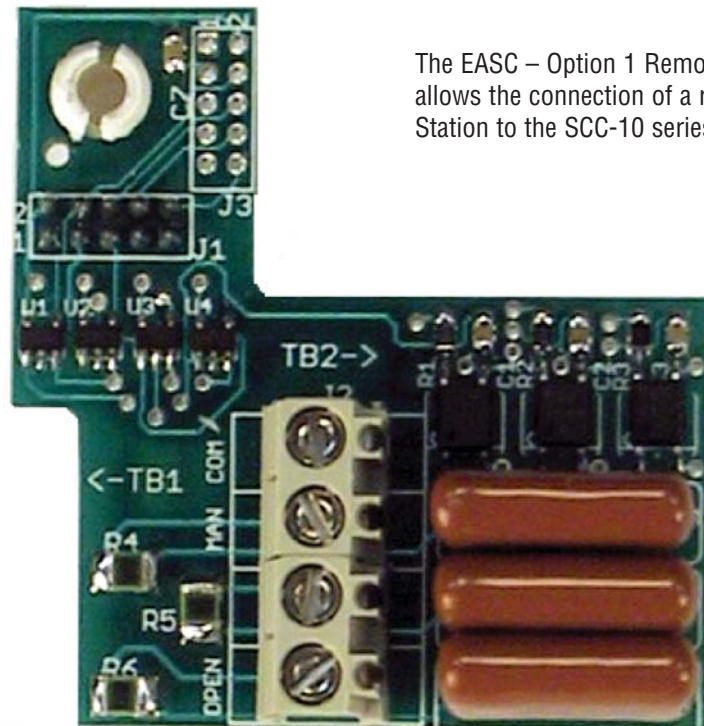


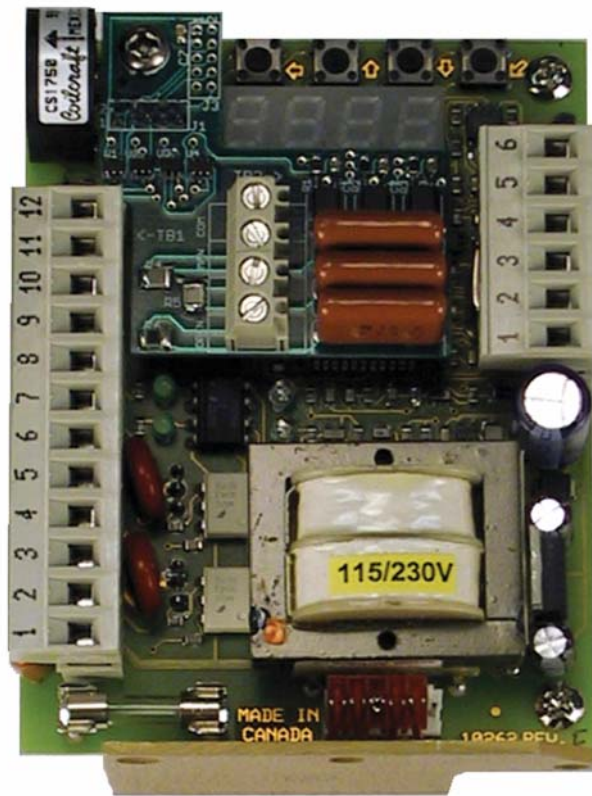
PBIC – 10 Interface Module



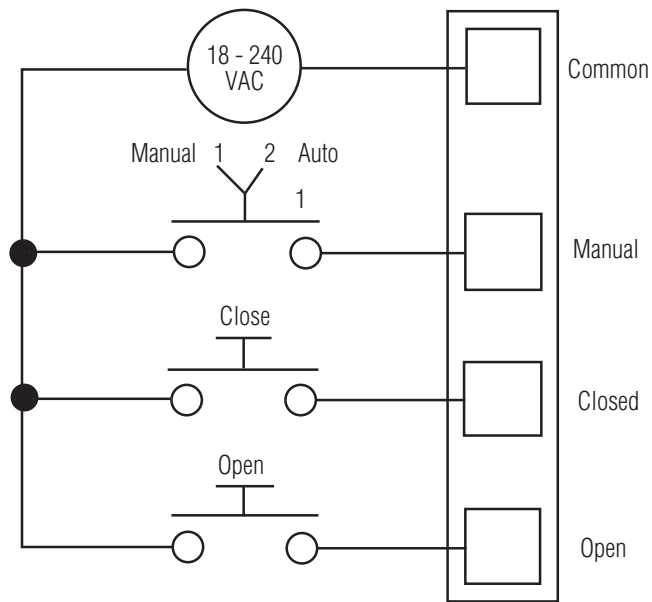
The EASC – Option 1 Remote Manual Push Button Interface allows the connection of a remote Hand/Auto Pushbutton Station to the SCC-10 series of controllers.

Features

- Mounts directly to the SCC-10 series of actuator controllers
- Terminal strip provided for easy connections
- Has inputs for Manual, Open and Close switches
- No relays or external devices required for full manual control
- Inputs
 - Common
 - Open
 - Close
 - Manual
- Input Requirements
 - 18 – 240VAC @ 5mA
- Size
 - Mounts directly to the SCC-10



SCC-10-120/230A Shown with Option 1 Installed



SCC-10-OPTION 1 Wiring Diagram

**Industrial Products Group
Dresser, Inc.**

16240 Port Northwest Drive
Houston, Texas 77041-2645 USA
Ph: 832.590.2306
Toll Free Phone: 800.945.9898

Fax: 713.849.2879
Email: rcs@dresser.com, andco@dresser.com



www.dresser.com